



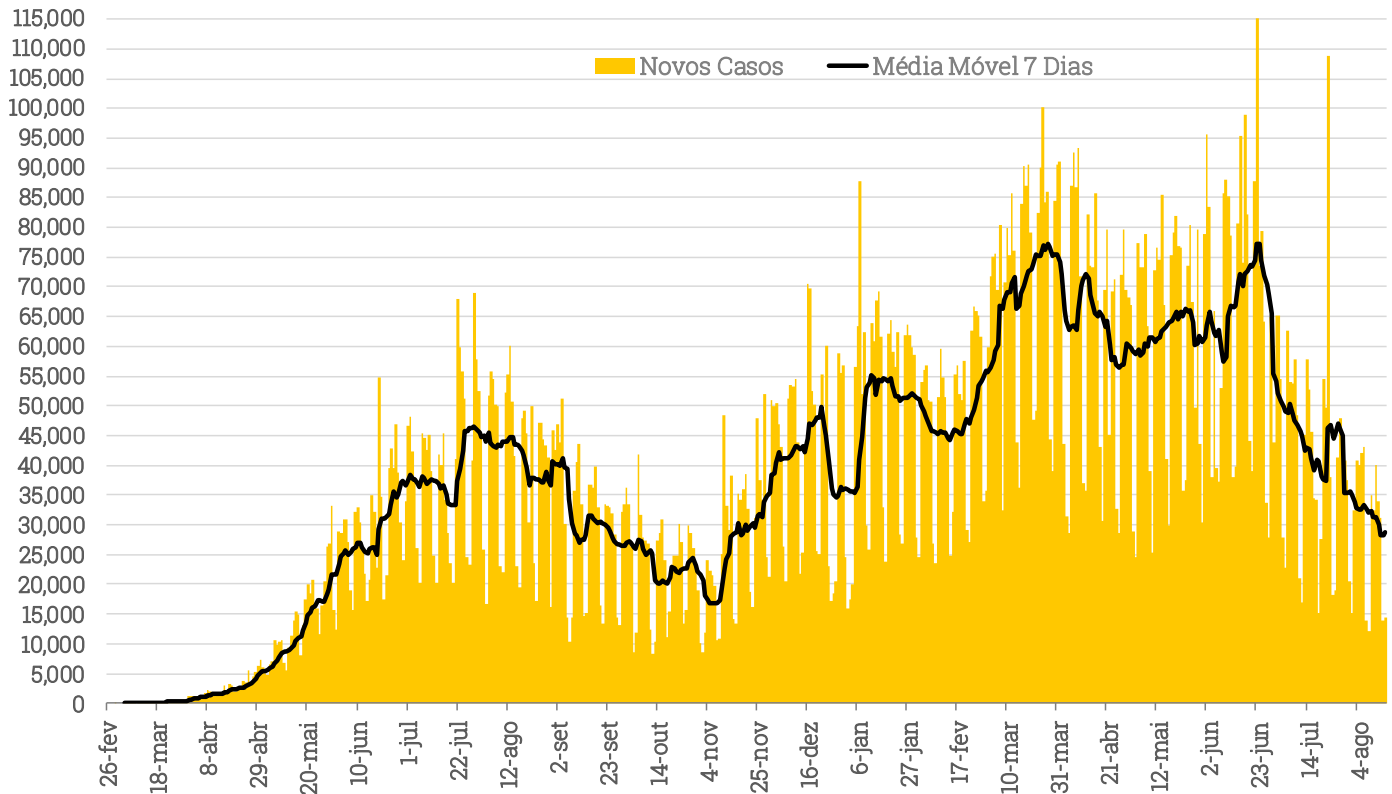
# Coronavírus: Update Diário

17 de Agosto de 2021

 investimentos

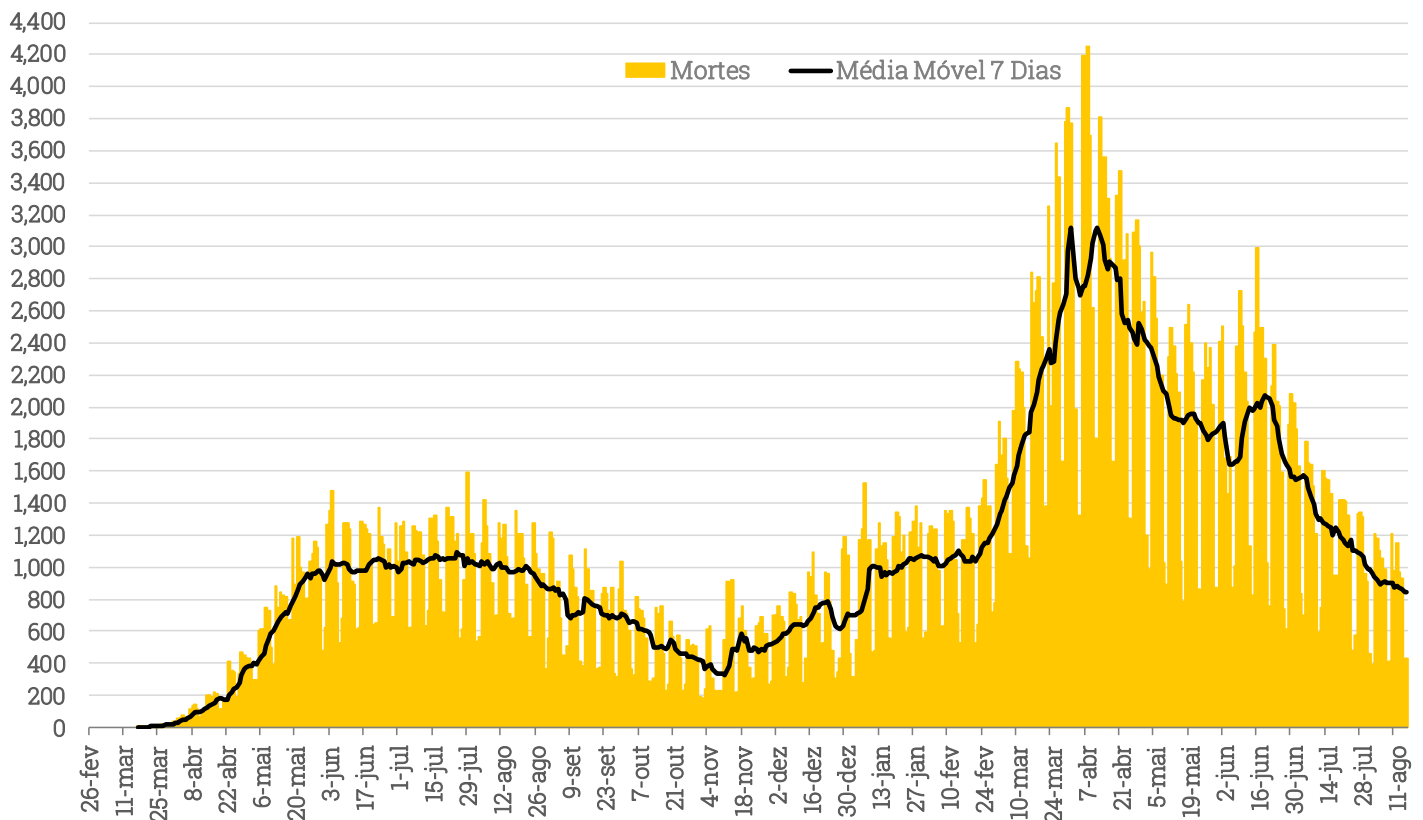
# Brasil

## Casos Diários de Coronavírus - Brasil (Ministério da Saúde)

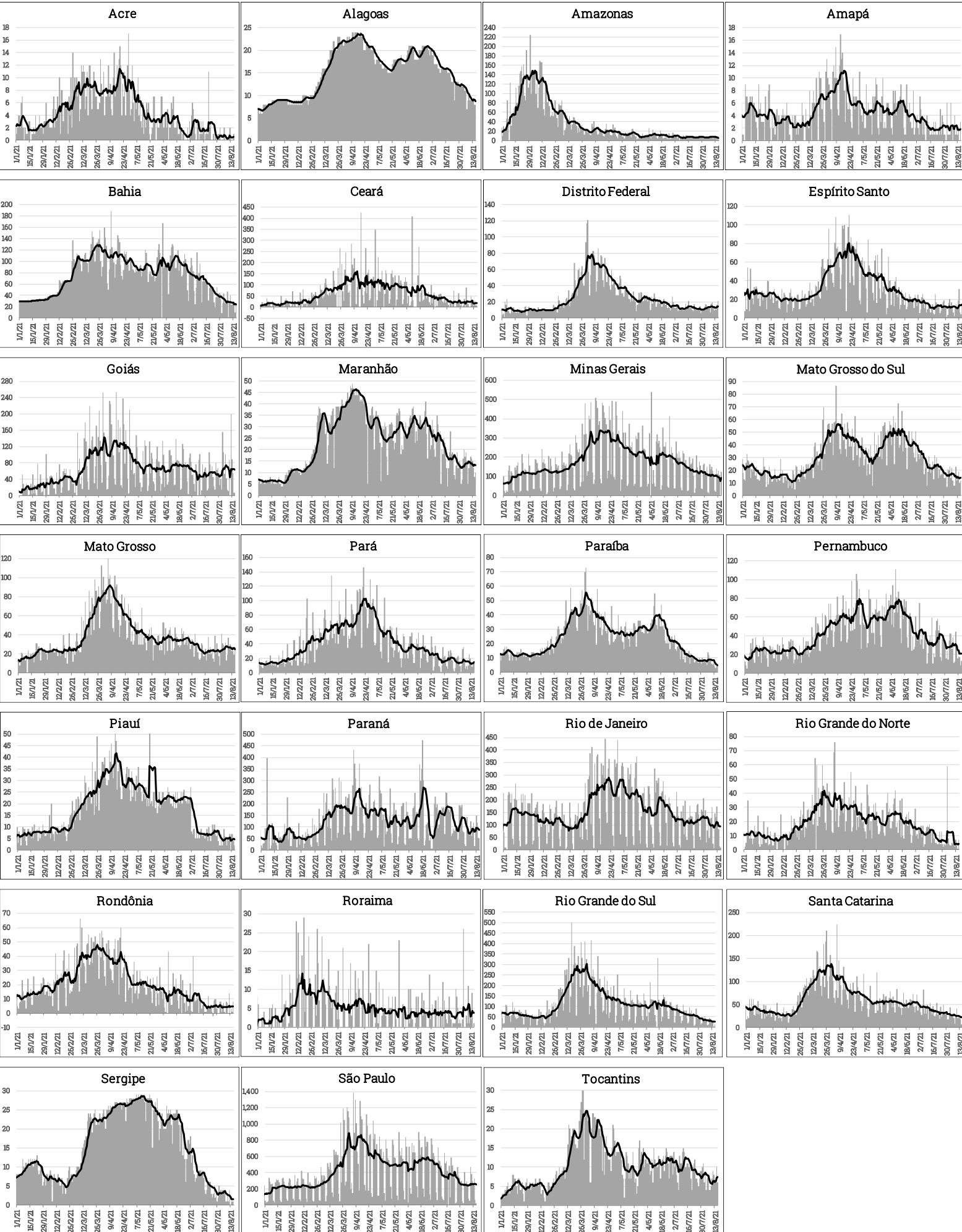


Fonte: Ministério da Saúde. Elaboração: XP Investimentos.

## Mortes Diárias por Coronavírus - Brasil (Ministério da Saúde)

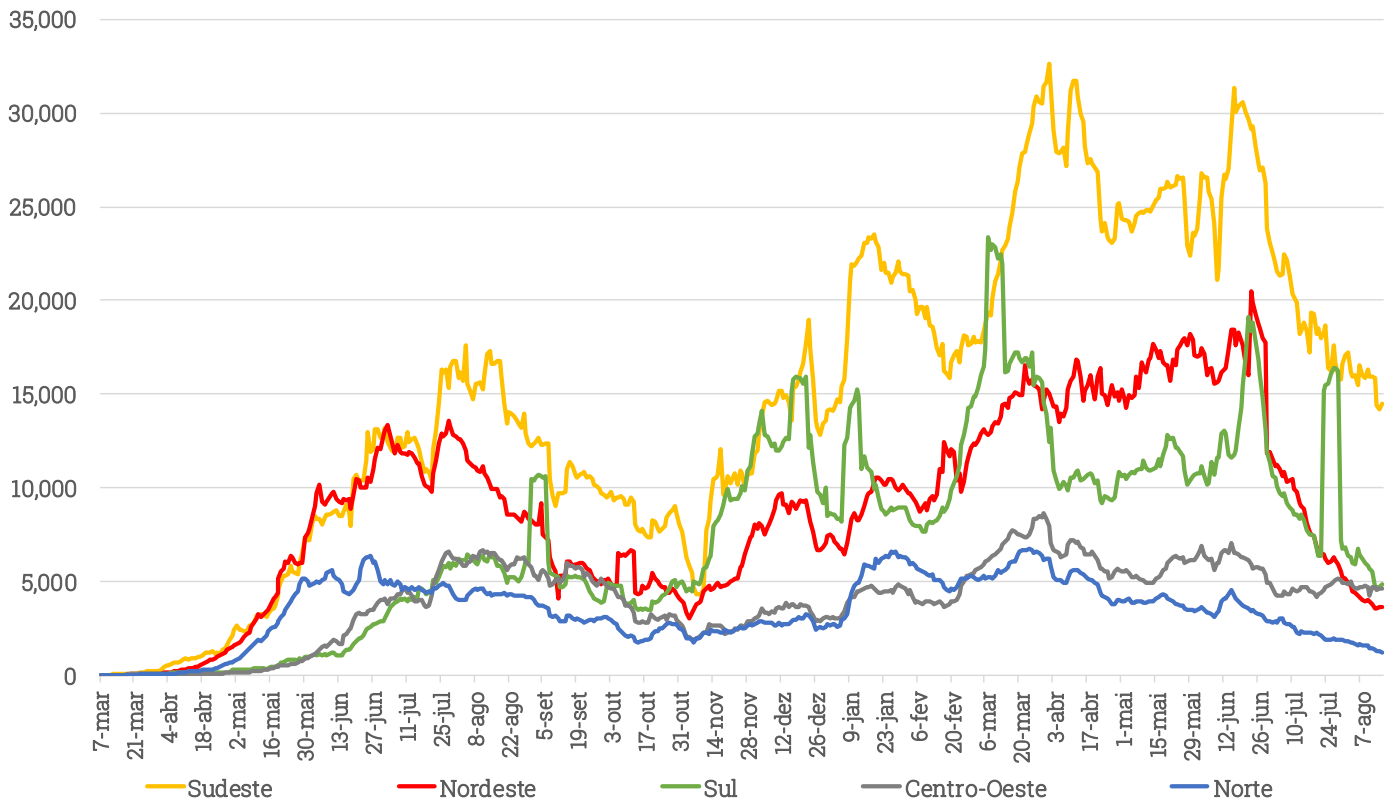


Fonte: Ministério da Saúde. Elaboração: XP Investimentos.

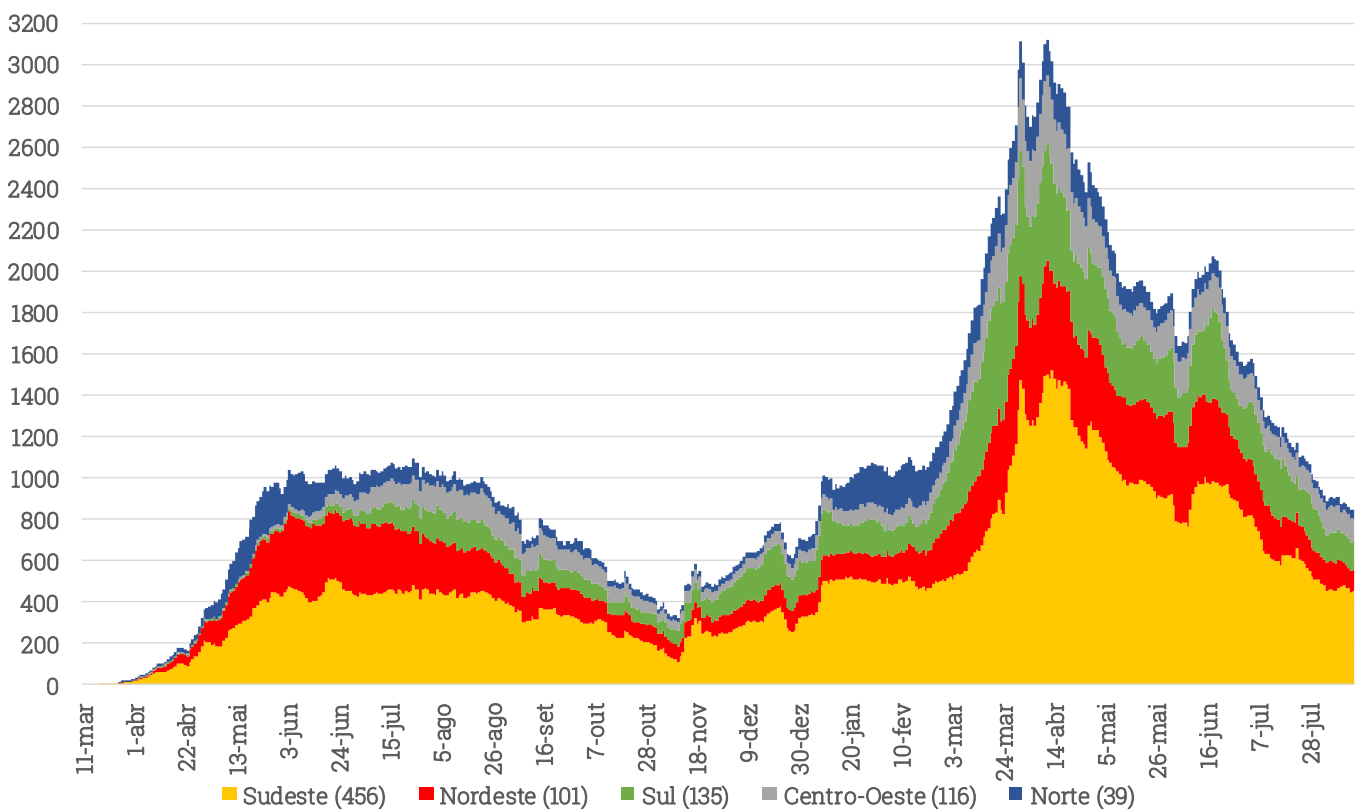


## Regiões Brasileiras

Casos Diários de Coronavírus (Média Móvel 7 Dias) - Regiões Brasileiras (Min. da Saúde)

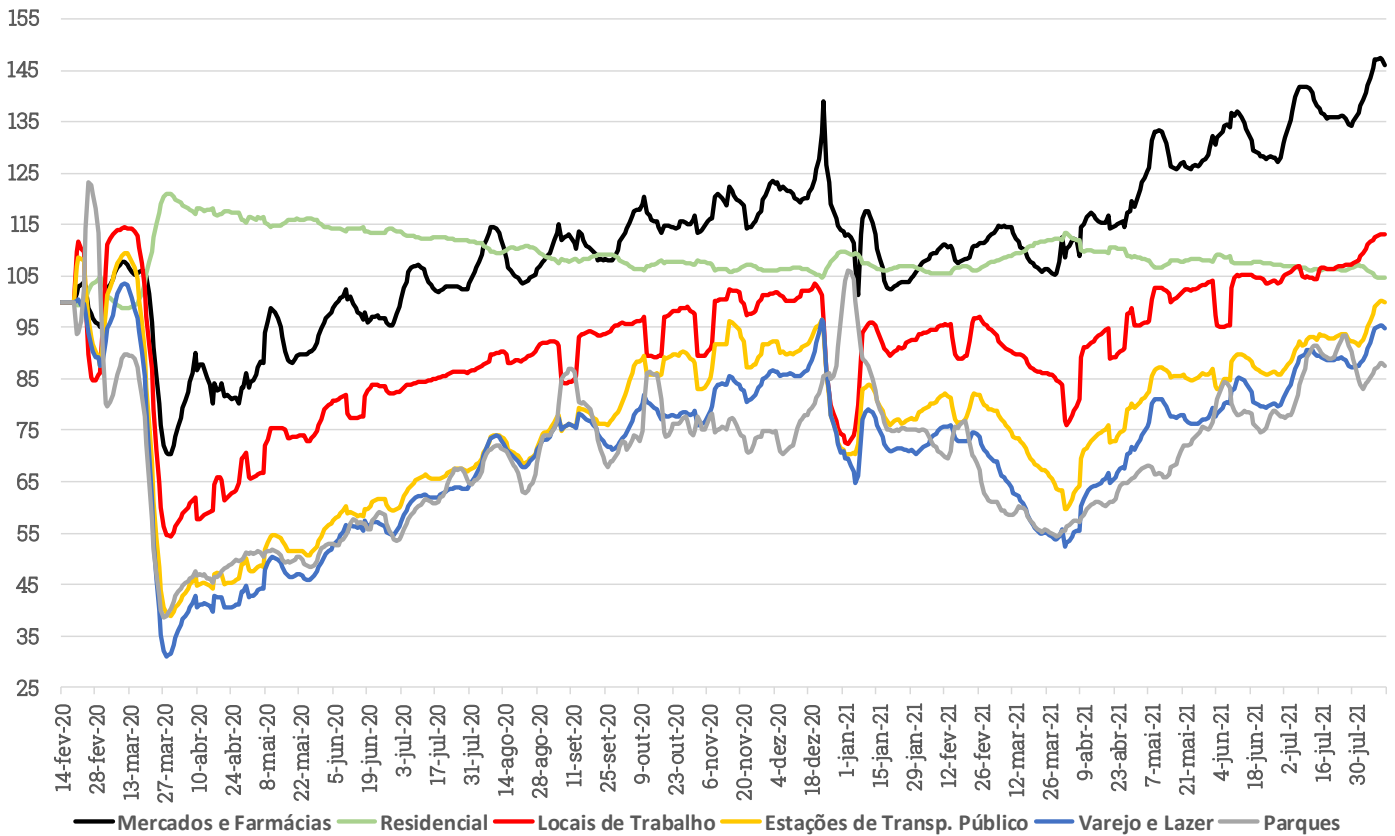


Mortes Diárias (Média Móvel 7 Dias) - Regiões Brasileiras (Min. da Saúde)



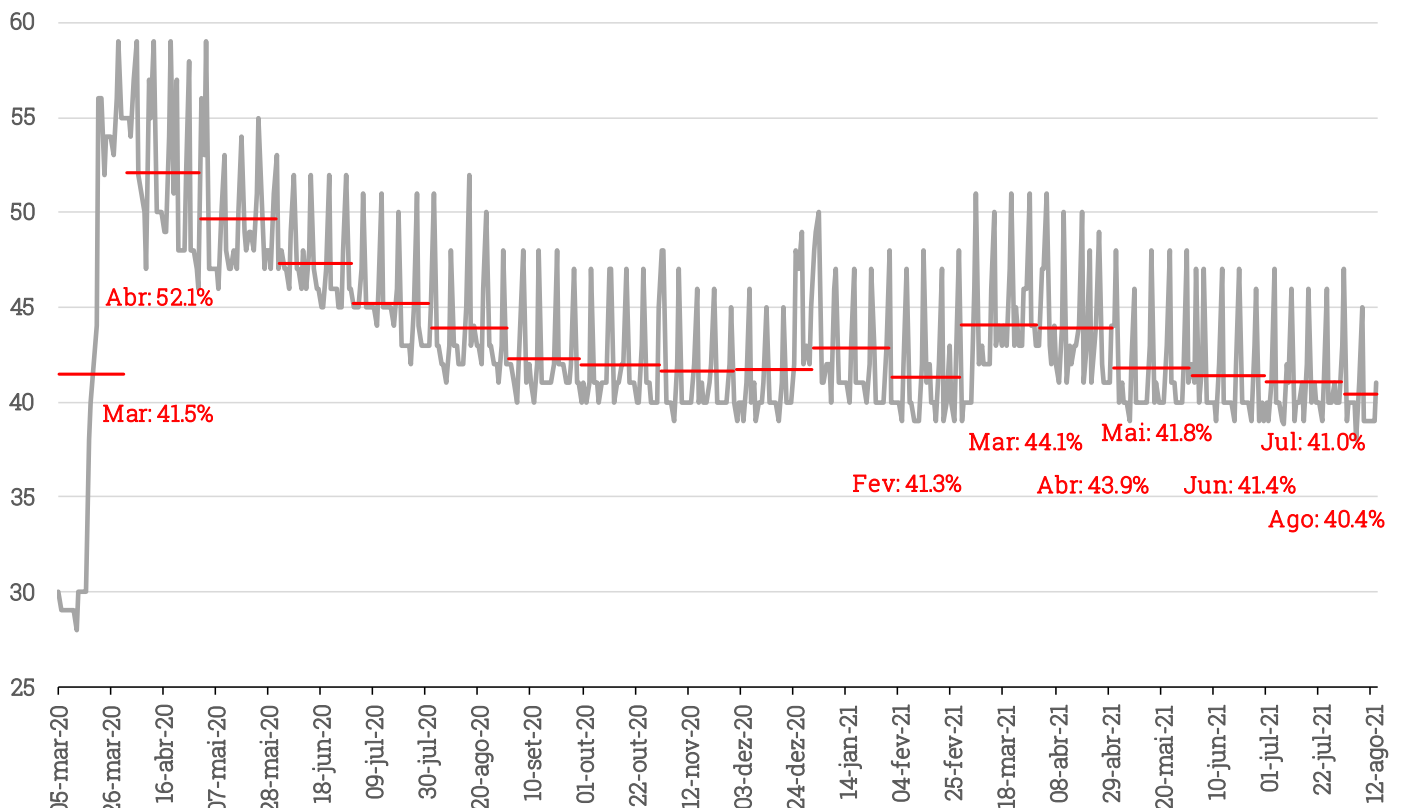
# Isolamento Social

Google Mobilidade (mm7d. Pré-pandemia = 100)



Fonte: Google. Elaboração: XP Investimentos

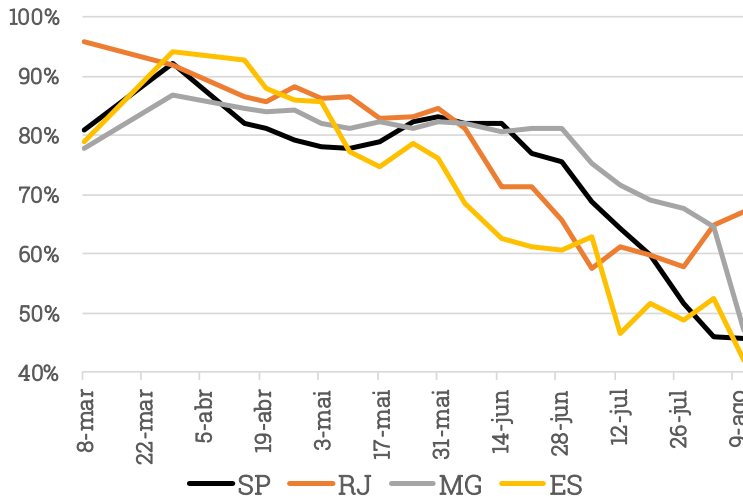
## Estado de São Paulo: Isolamento Social (%)



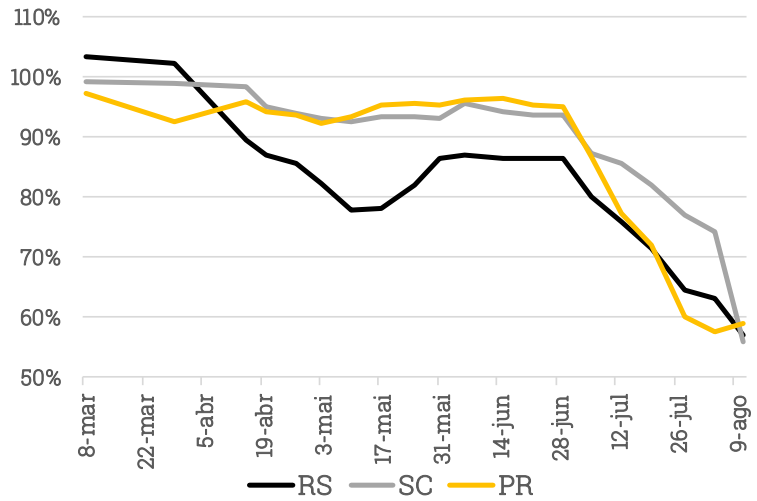
Fonte: Secretaria da Saúde do Estado de São Paulo. Elaboração: XP Investimentos

# Ocupação de Leitos

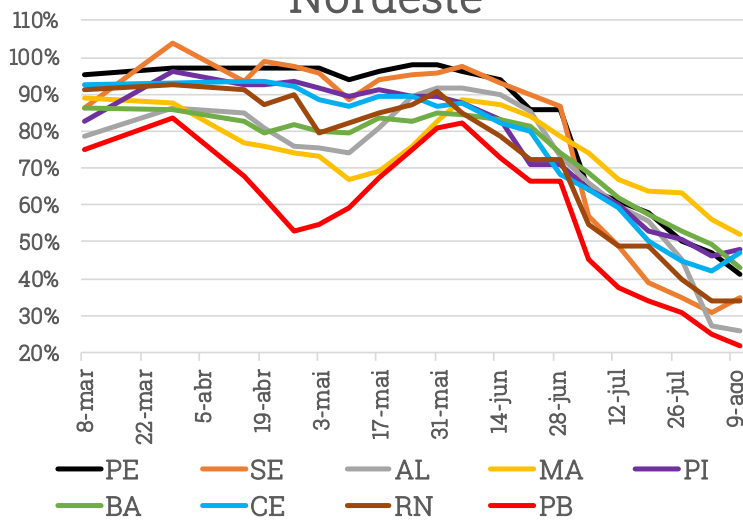
## Sudeste



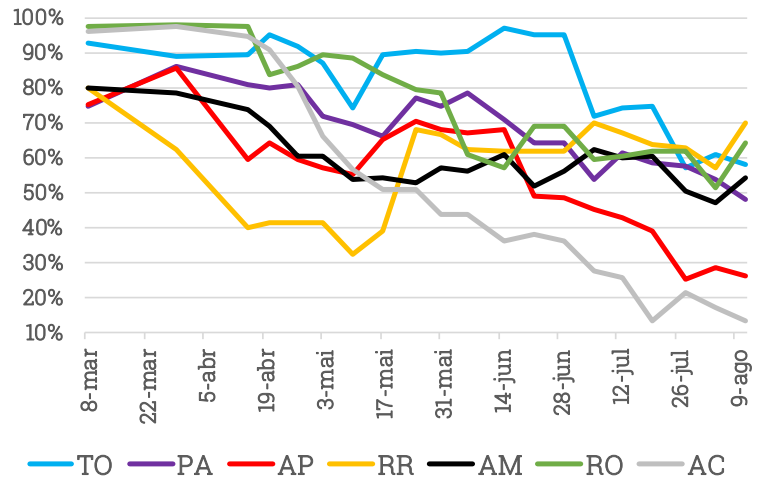
## Sul



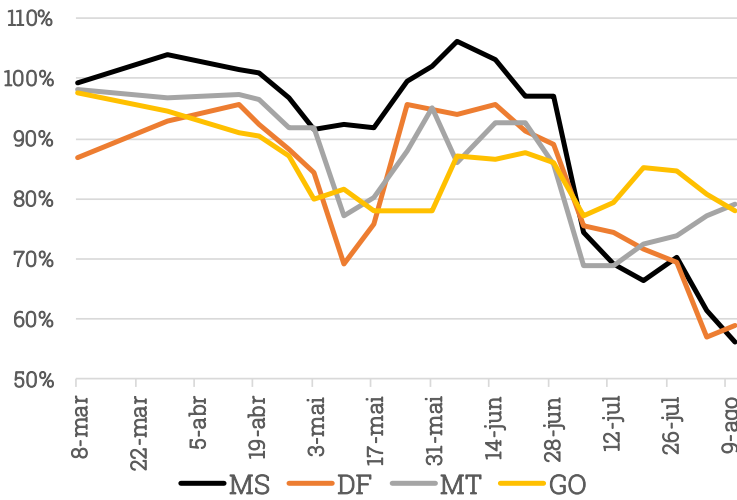
## Nordeste



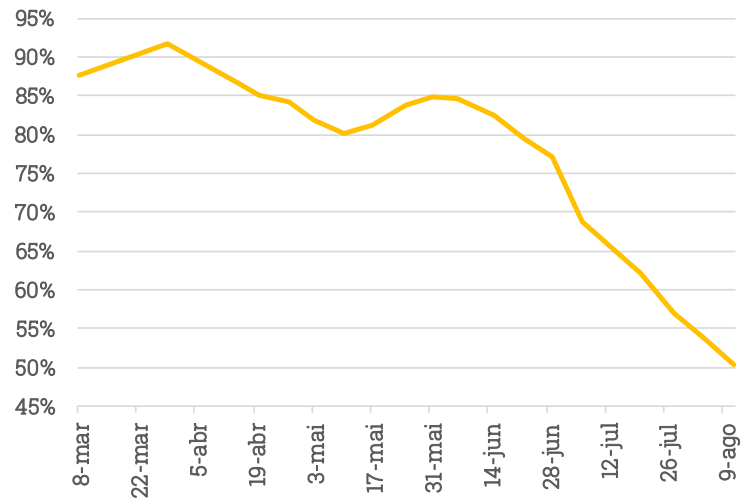
## Norte



## Centro-Oeste

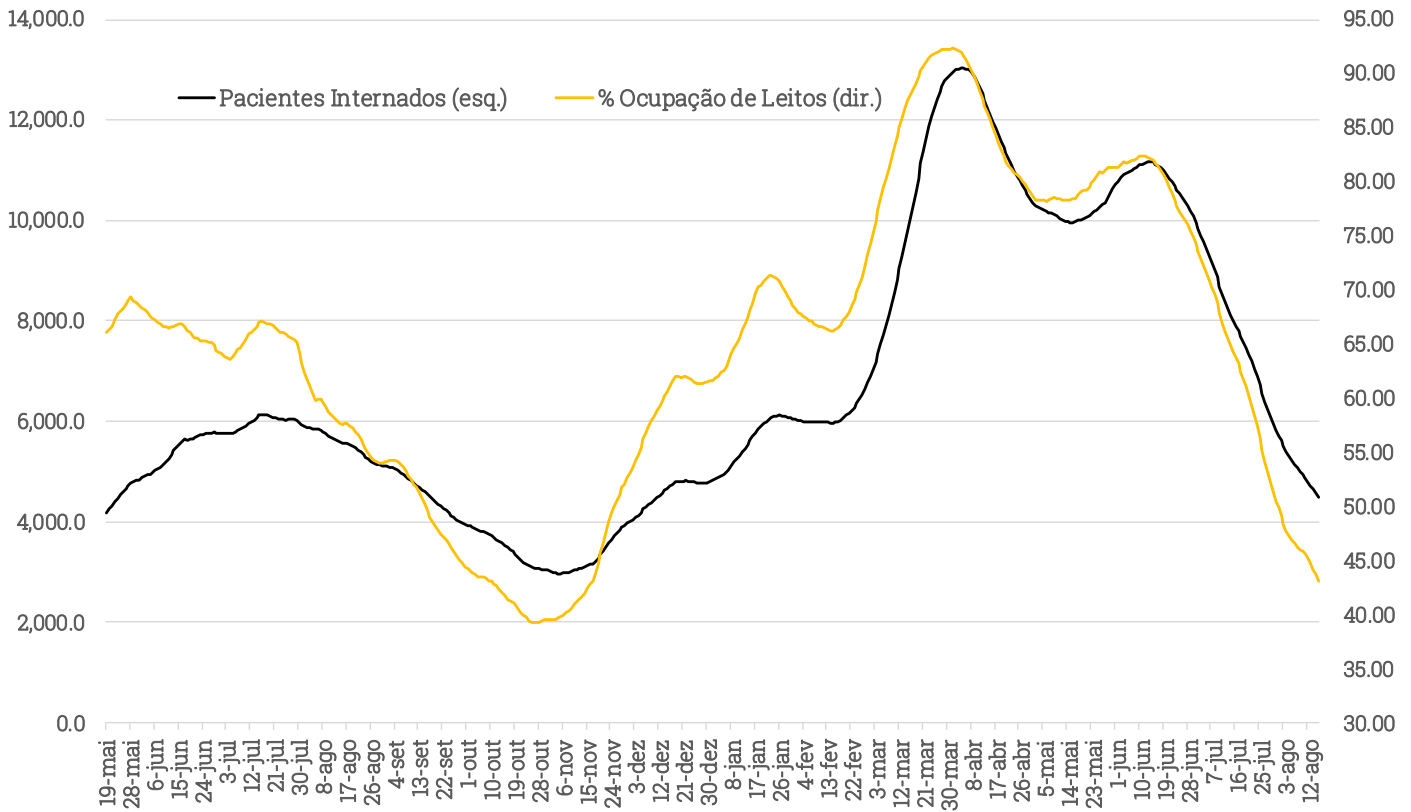


## Brasil



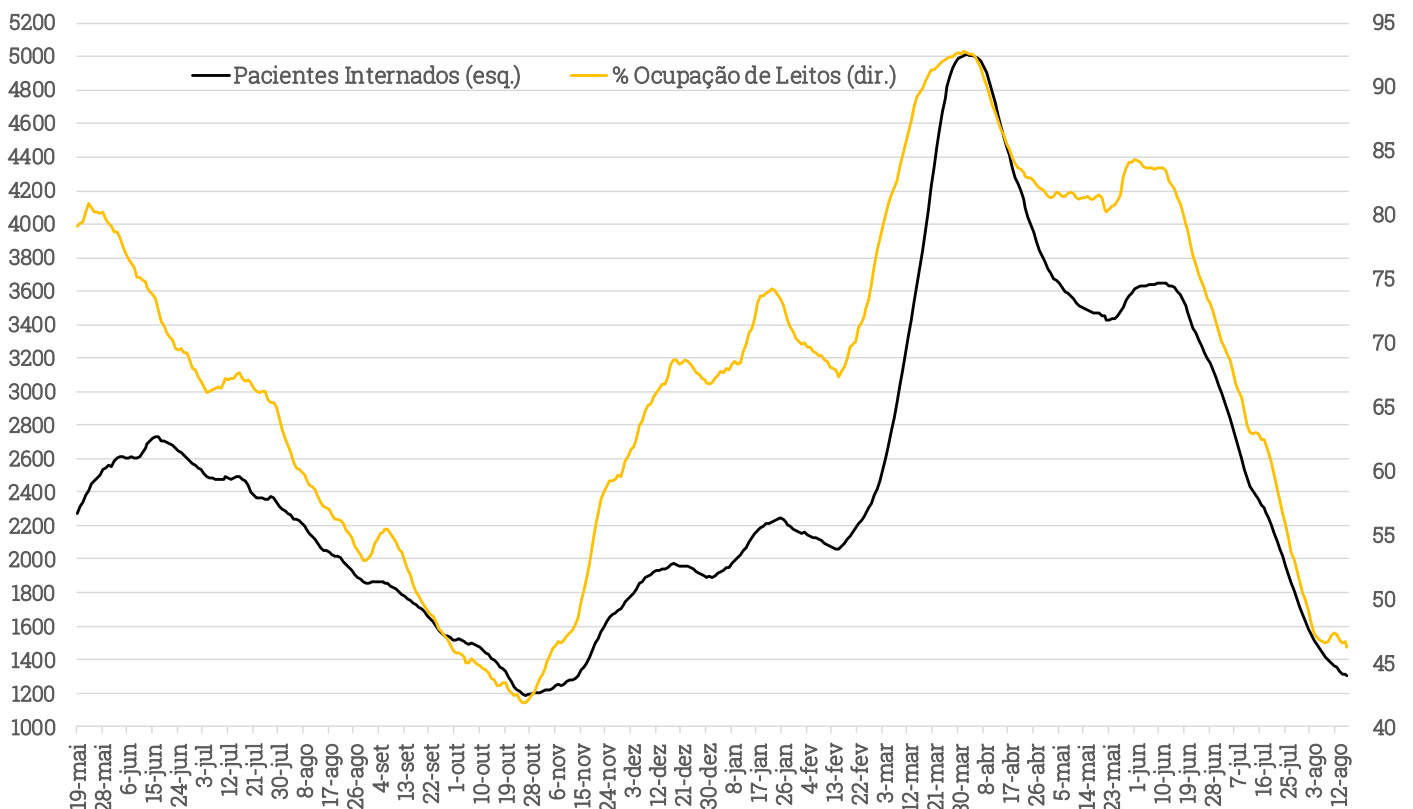
# Internações em São Paulo

Internações em UTIs & %Ocupação de Leitos de Covid-19 (Estado de SP - mm7d)



Fonte: Secretaria de Saúde do Estado de São Paulo. Elaboração: XP Investimentos

Internações em UTIs & %Ocupação de Leitos de Covid-19 (SP Capital - mm7d)



Fonte: Secretaria de Saúde do Estado de São Paulo. Elaboração: XP Investimentos

## Cronograma de Entregas de Vacinas

### Cronograma de Entregas de Vacinas Covid-19\* (milhões de doses)

Origem	Jan	Fev	Mar	Abr	Mai	Jun	Jul	Ago	Set	4º Tri
Fiocruz (+AstraZeneca Imp.)	2.0	2.0	2.8	19.2	21.7	18.3	14.5	11.6	12.0	118.0
Butantan (+Sinovac Imp.)	8.7	4.9	22.8	5.8	5.1	5.0	10.7	20.0	17.1	30.0
Covax (AstraZeneca)	-	-	1.0	-	4.1	-	4.0	-	-	5.1
Covax (Pfizer)	-	-	-	-	-	0.8	-	-	-	-
Covax (A Definir)	-	-	-	-	-	-	-	-	-	27.4
Pfizer	-	-	-	1.0	2.5	12.1	13.6	33.3	37.5	100.0
Janssen (Compra + Doação)	-	-	-	-	-	4.8	-	-	-	36.2
<b>Total</b>	<b>10.7</b>	<b>6.9</b>	<b>26.6</b>	<b>26.0</b>	<b>33.4</b>	<b>41.0</b>	<b>42.8</b>	<b>64.9</b>	<b>66.6</b>	<b>316.7</b>

Fonte: Min. da Saúde. Elaboração: XP. \*Atualizado em 11/08/21. Não considera Covaxin/Sputnik (30M doses). Não considera controle de qualidade

## Vacinação no Brasil

### Vacinação nos Estados Brasileiros

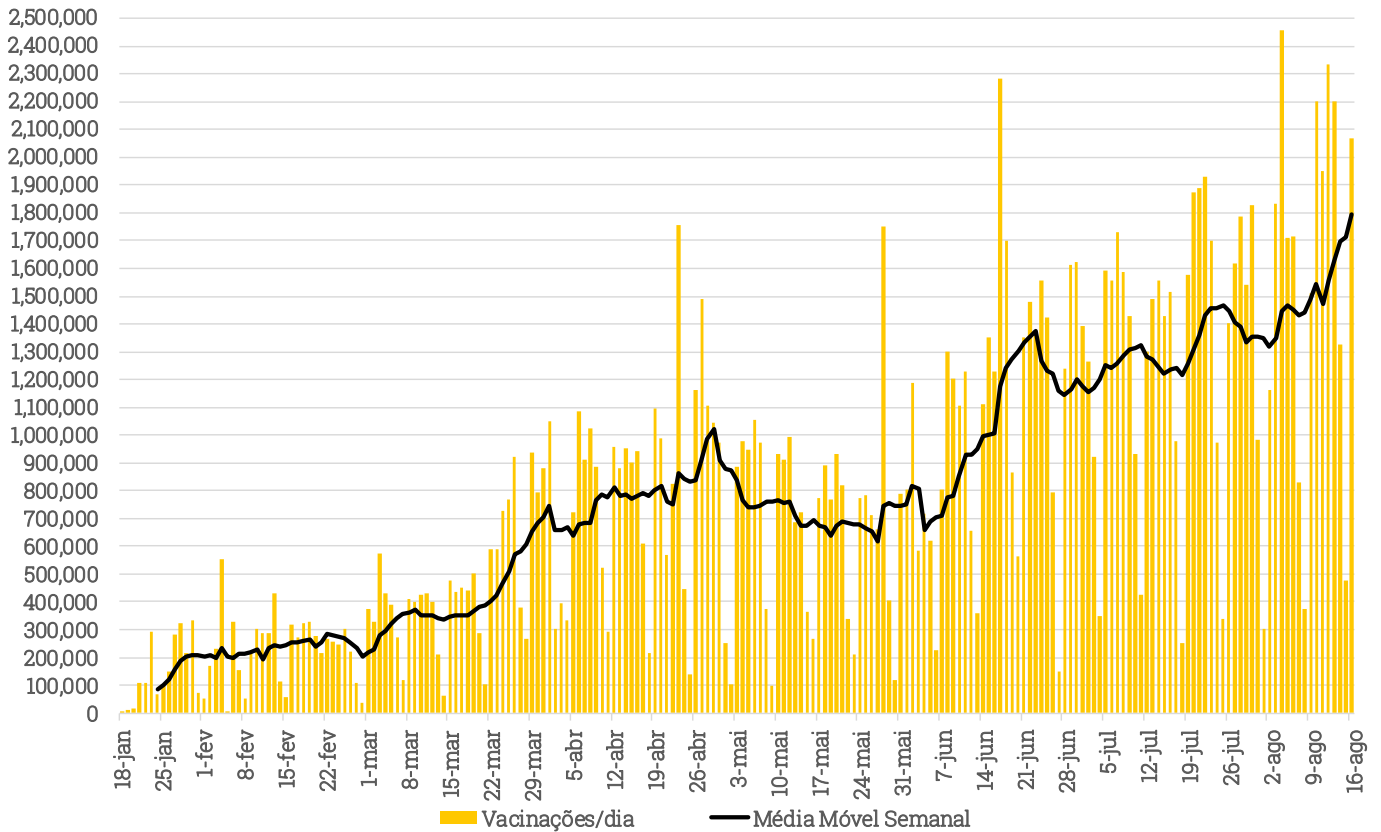
UF	Doses Aplicadas (1ª Dose)	Doses Aplicadas (2ª Dose/Única)	Total de Doses Aplicadas	% Pop. com 1ª Dose	% Pop. com 2ª Dose/Única
SP	31,439,038	13,264,382	44,703,420	67.91%	28.65%
RS	6,842,426	3,436,233	10,278,659	59.91%	30.09%
DF	1,818,434	698,868	2,517,302	59.53%	22.88%
MS	1,630,978	1,062,216	2,693,194	58.06%	37.81%
SC	4,154,419	1,811,358	5,965,777	57.28%	24.97%
PR	6,524,319	2,675,209	9,199,528	56.65%	23.23%
ES	2,200,998	1,072,104	3,273,102	54.15%	26.38%
MG	11,242,739	4,923,715	16,166,454	52.79%	23.12%
RN	1,852,837	725,110	2,577,947	52.42%	20.52%
SE	1,205,231	441,462	1,646,693	51.98%	19.04%
PB	2,081,232	841,513	2,922,745	51.53%	20.83%
RJ	8,860,049	3,957,493	12,817,542	51.01%	22.78%
PE	4,842,162	2,032,736	6,874,898	50.35%	21.13%
AM	2,092,813	783,248	2,876,061	49.73%	18.61%
BA	7,354,313	3,366,792	10,721,105	49.26%	22.55%
GO	3,498,225	1,414,053	4,912,278	49.17%	19.88%
CE	4,474,689	1,997,179	6,471,868	48.72%	21.74%
RO	873,748	316,256	1,190,004	48.63%	17.60%
MT	1,684,050	653,988	2,338,038	47.75%	18.54%
AC	420,237	166,116	586,353	46.99%	18.58%
PI	1,531,794	655,845	2,187,639	46.68%	19.99%
AL	1,516,653	656,912	2,173,565	45.26%	19.60%
TO	714,663	280,548	995,211	44.93%	17.64%
MA	3,167,670	1,246,418	4,414,088	44.52%	17.52%
PA	3,525,392	1,927,840	5,453,232	40.56%	22.18%
AP	349,025	110,022	459,047	40.50%	12.77%
RR	251,268	83,310	334,578	39.80%	13.20%
<b>Brasil</b>	<b>116,149,402</b>	<b>50,600,926</b>	<b>166,750,328</b>	<b>54.85%</b>	<b>23.89%</b>

Fontes: Coronavirusbrasil. Elaboração: XP Investimentos



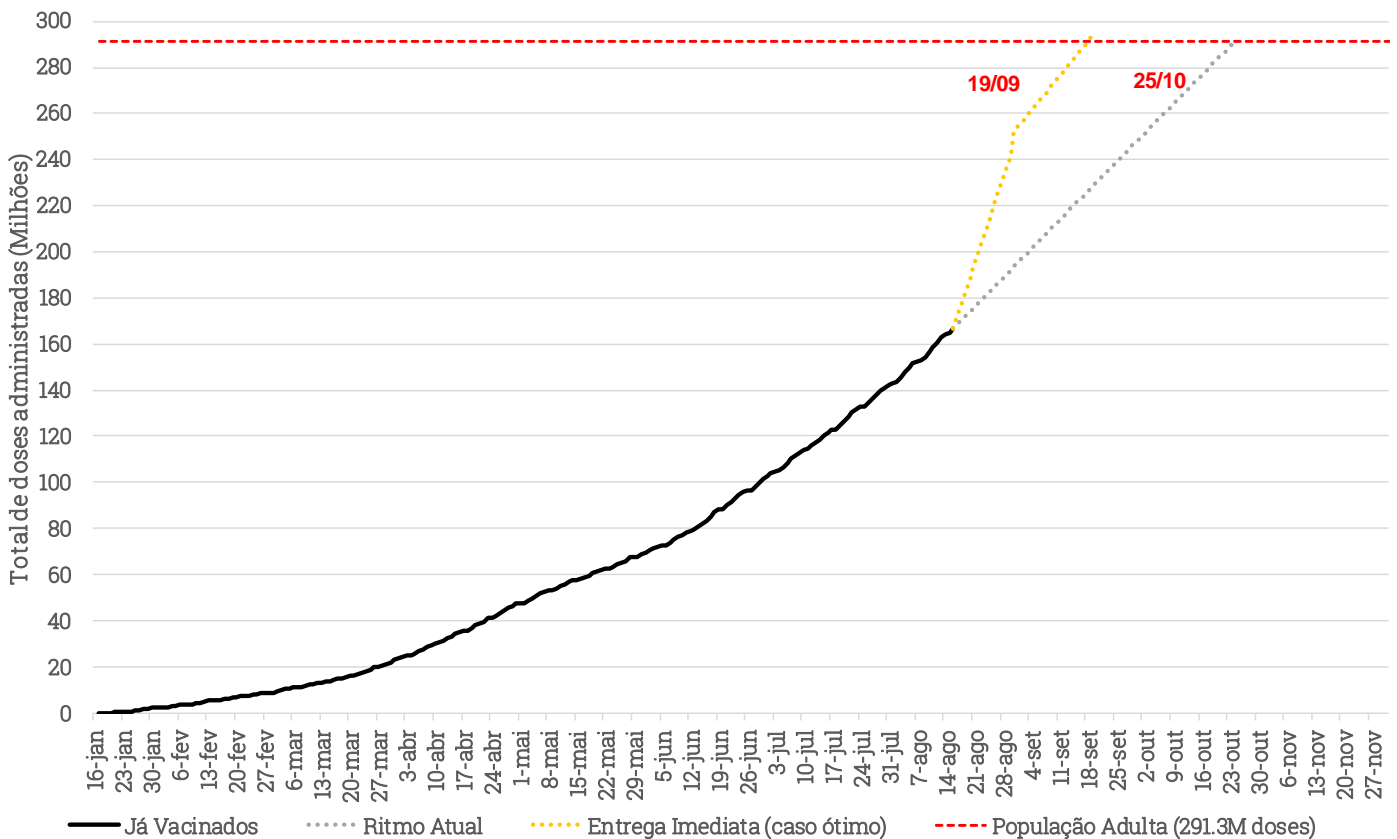
# Vacinação no Brasil

Vacinação Diária: Brasil (Coronavirusbral)



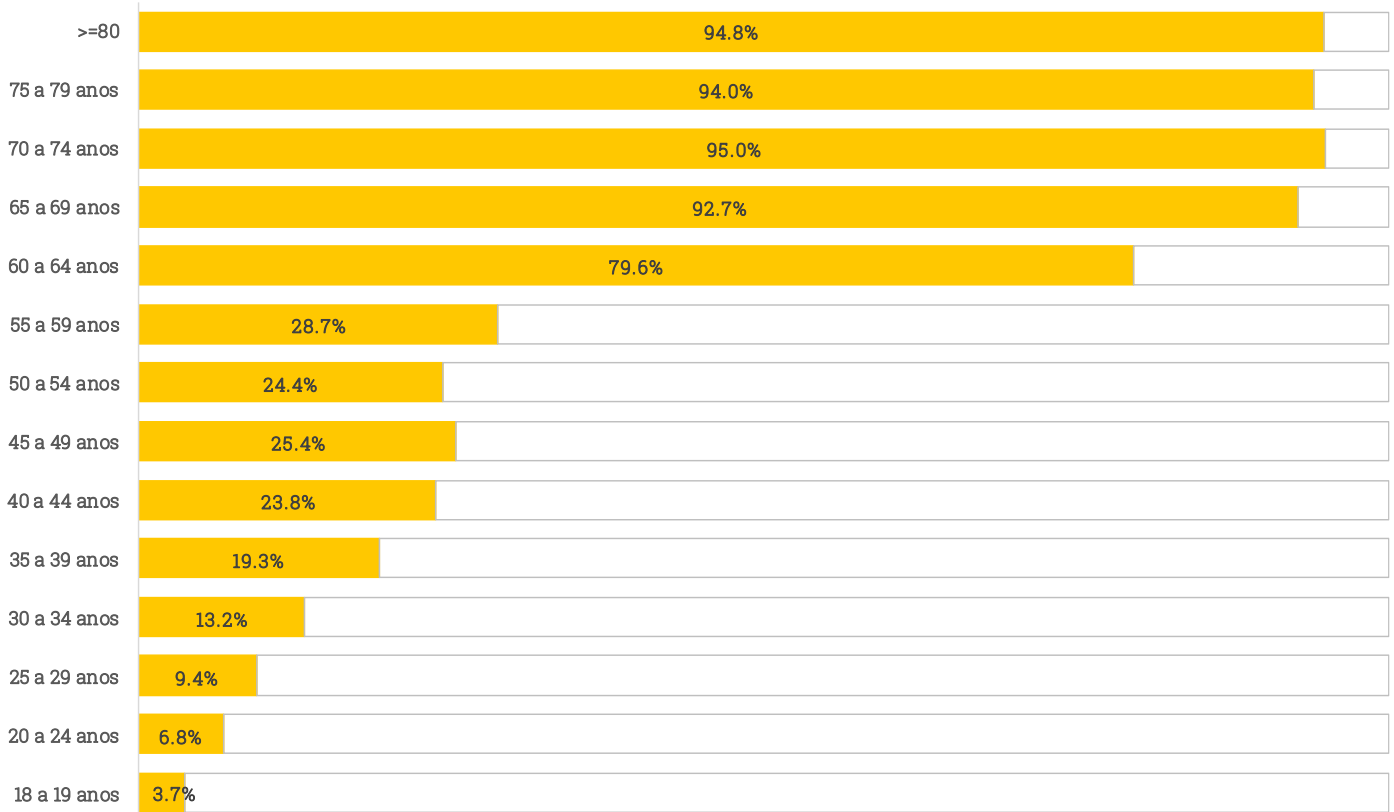
Fontes: Coronavirusbral. Elaboração: XP

Ritmo de Vacinação no Brasil (Coronavirusbral)



Fonte: Coronavirusbral. Elaboração: XP

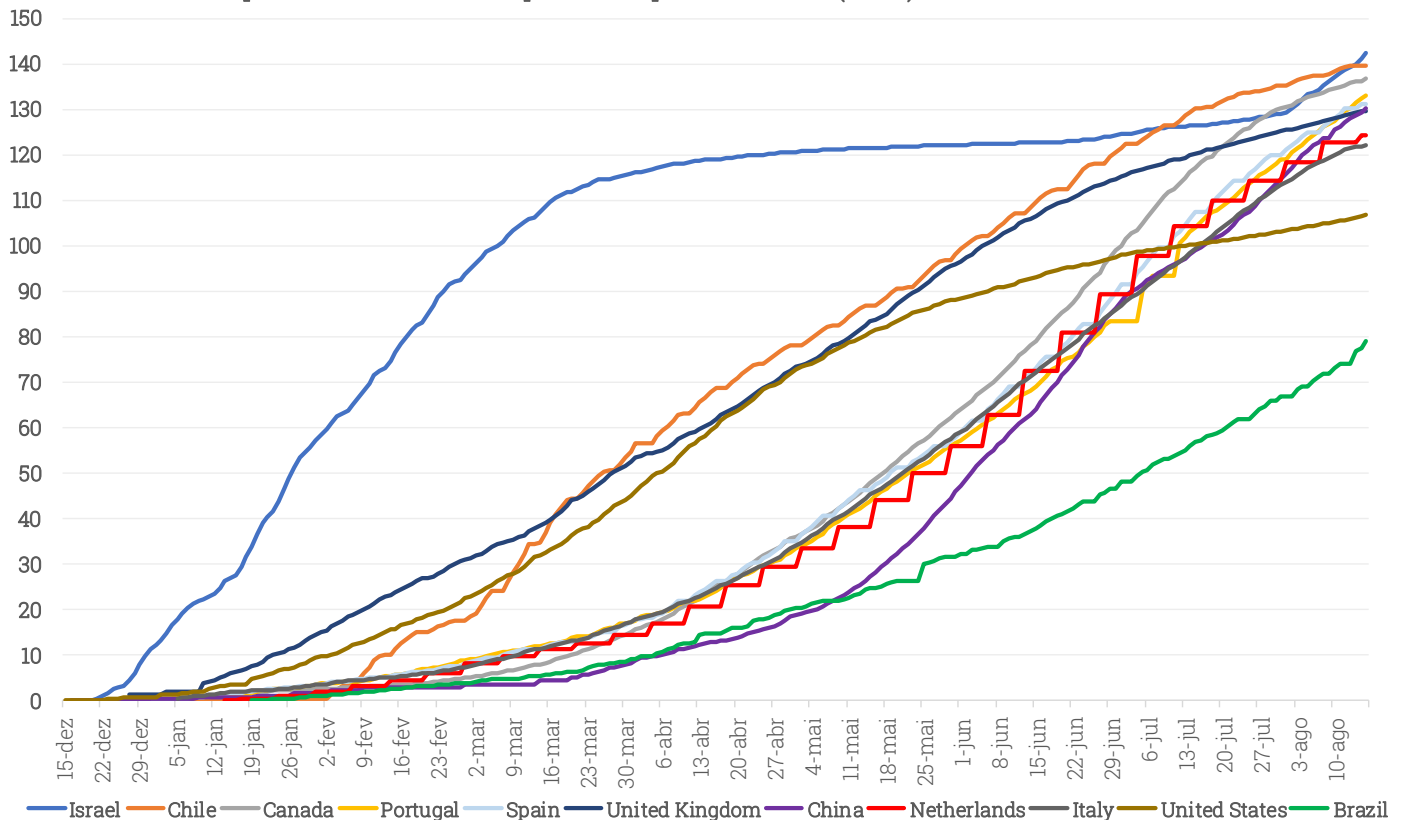
### Percentual da População com 2 doses ou Dose Única



Fonte: Ministério da Saúde. Elaboração: XP

### Vacinação no Mundo

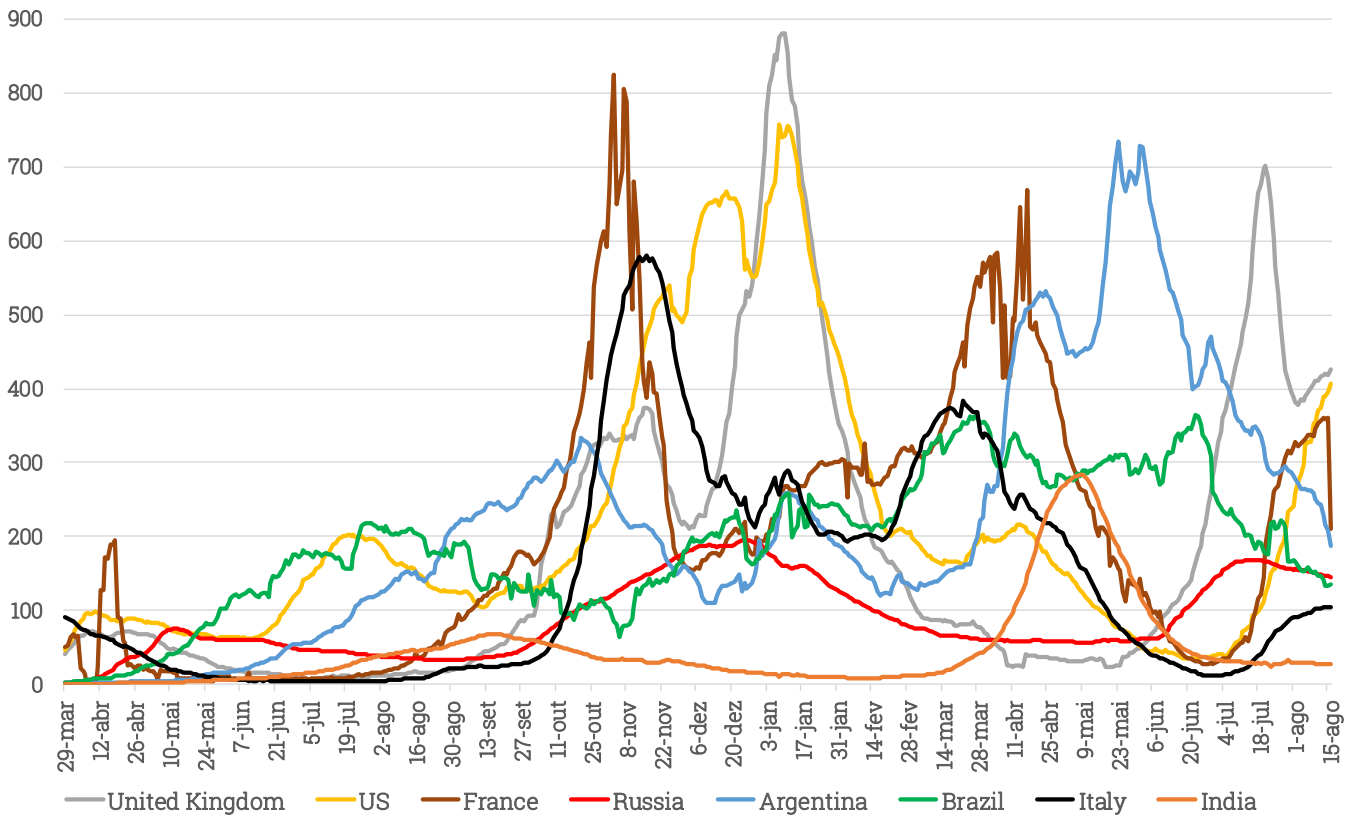
Doses de Vacina por 100 Habitantes- 10 primeiros países + Brasil (OWD)



Fonte: Our World in Data. Elaboração: XP

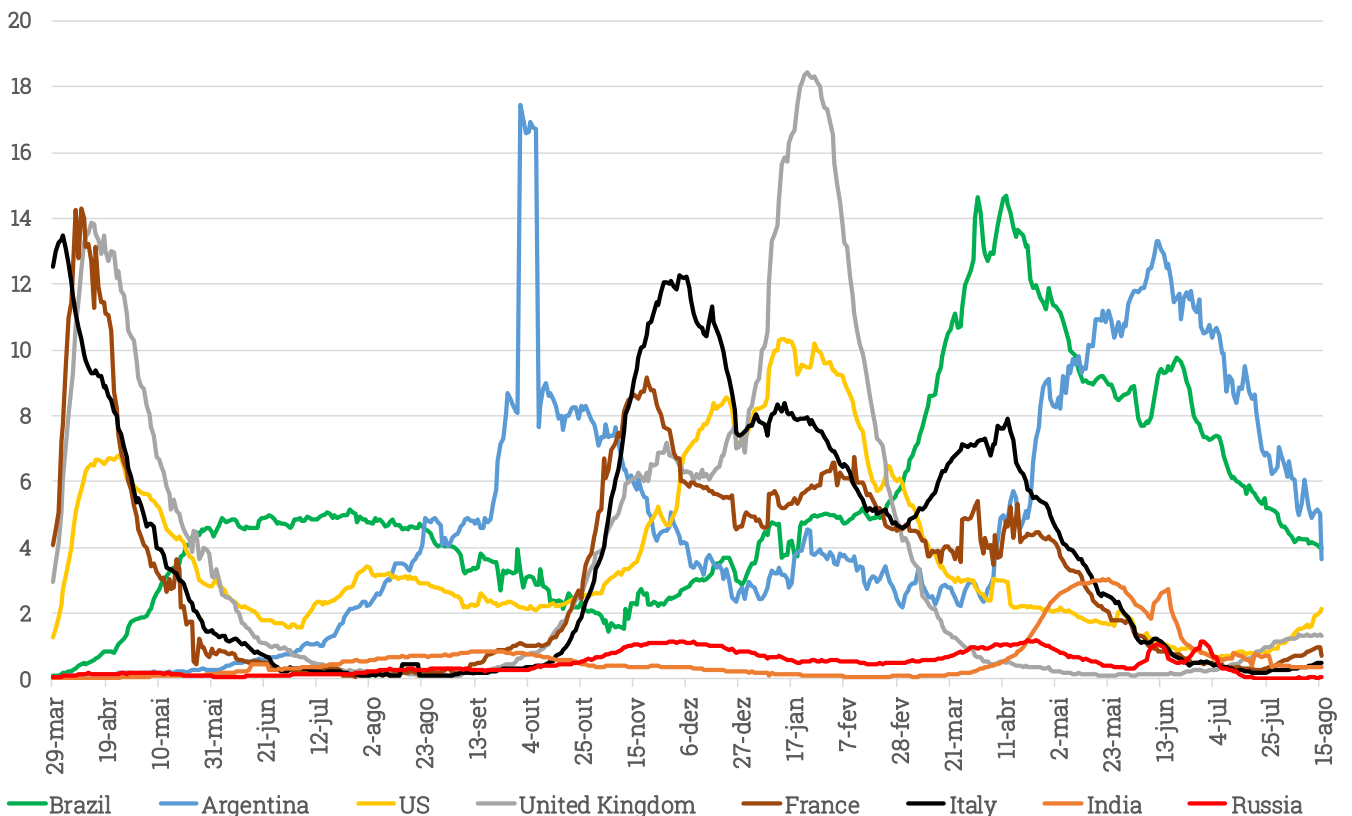
## Países Selecionados

Novos Casos por Milhão de Habitantes (Média Móvel 7 Dias) - Principais Países (Johns Hopkins)



Fonte: JHU e ONU. Elaboração: XP Investimentos.

Novas Mortes por Milhão de Habitantes (Média Móvel 7 Dias)- Principais Países (JHU)



Fonte: JHU e ONU. Elaboração: XP Investimentos

## XP MACRO STRATEGY & POLITICAL ANALYSIS

Richard Back  
Head Political Analyst

Paulo Gama  
Political Analyst

Victor Scalet  
Political Analyst & Macro Strategist

Debora Santos  
Political Analyst

Alexandre Maluf  
Political Analyst

Marcelo Freller  
Strategist

Junia Gama  
Political Analyst

Sol Azcune  
Political Analyst



@orichardback



@opaulogama



XP Frequência Política

### Disclaimer

This material was prepared by XP Investimentos CCTVM S.A. (“XP Investimentos” ou “XP”) and should not be considered as a research material for the purpose of CVM Instruction 483/2010. All opinions, projections and estimates constitute the judgment of the author as of the date of transmission and these, plus any other information contained herein, are subject to change without notice. Nothing in this report constitutes a representation that any investment strategy or recommendation contained herein is suitable or appropriate to a recipient’s individual circumstances or otherwise constitutes a personal recommendation. This report is published solely for information purposes, it does not constitute an advertisement and is not to be construed as a solicitation or an offer to buy or sell any securities or related financial instruments. This material (including any attachments) is confidential, may contain proprietary or privileged information and is intended for the named recipient(s) only. XP Investimentos, affiliates, parentes, shareholders, director and officers does not provide any support, financially or otherwise to any political parties, political campaigns, candidates, or public officials.