



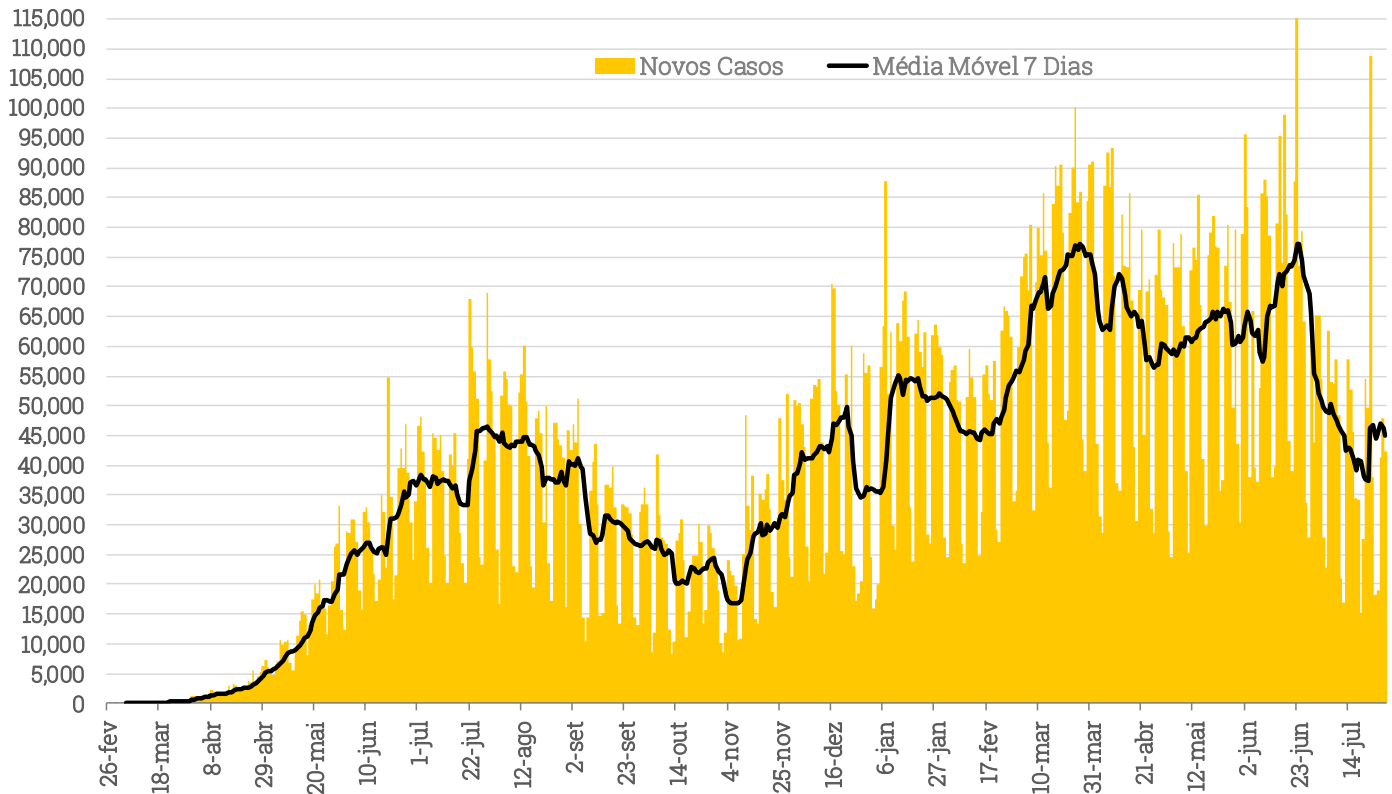
Coronavírus: Update Diário

30 de Julho de 2021

 investimentos

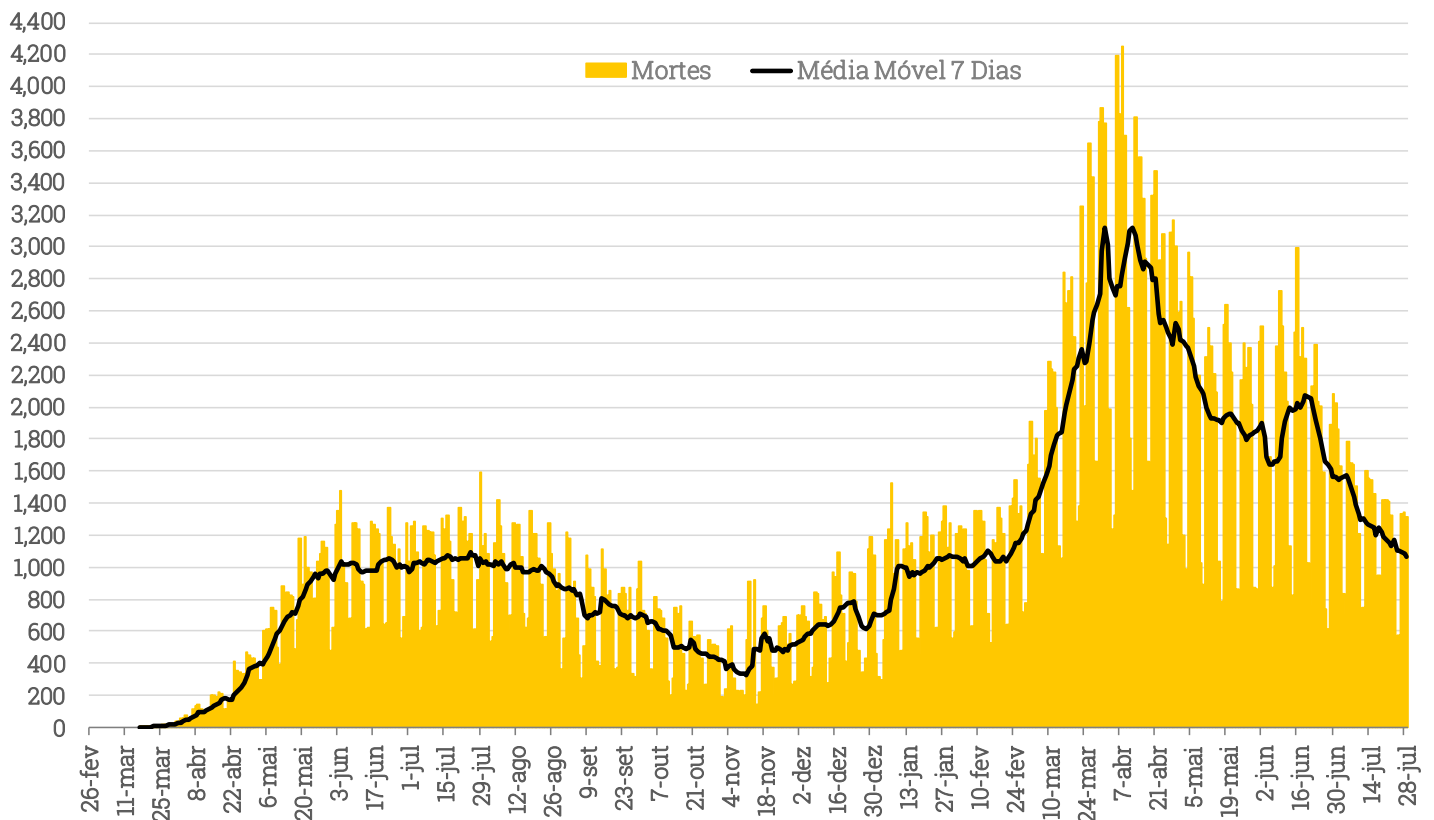
Brasil

Casos Diários de Coronavírus - Brasil (Ministério da Saúde)

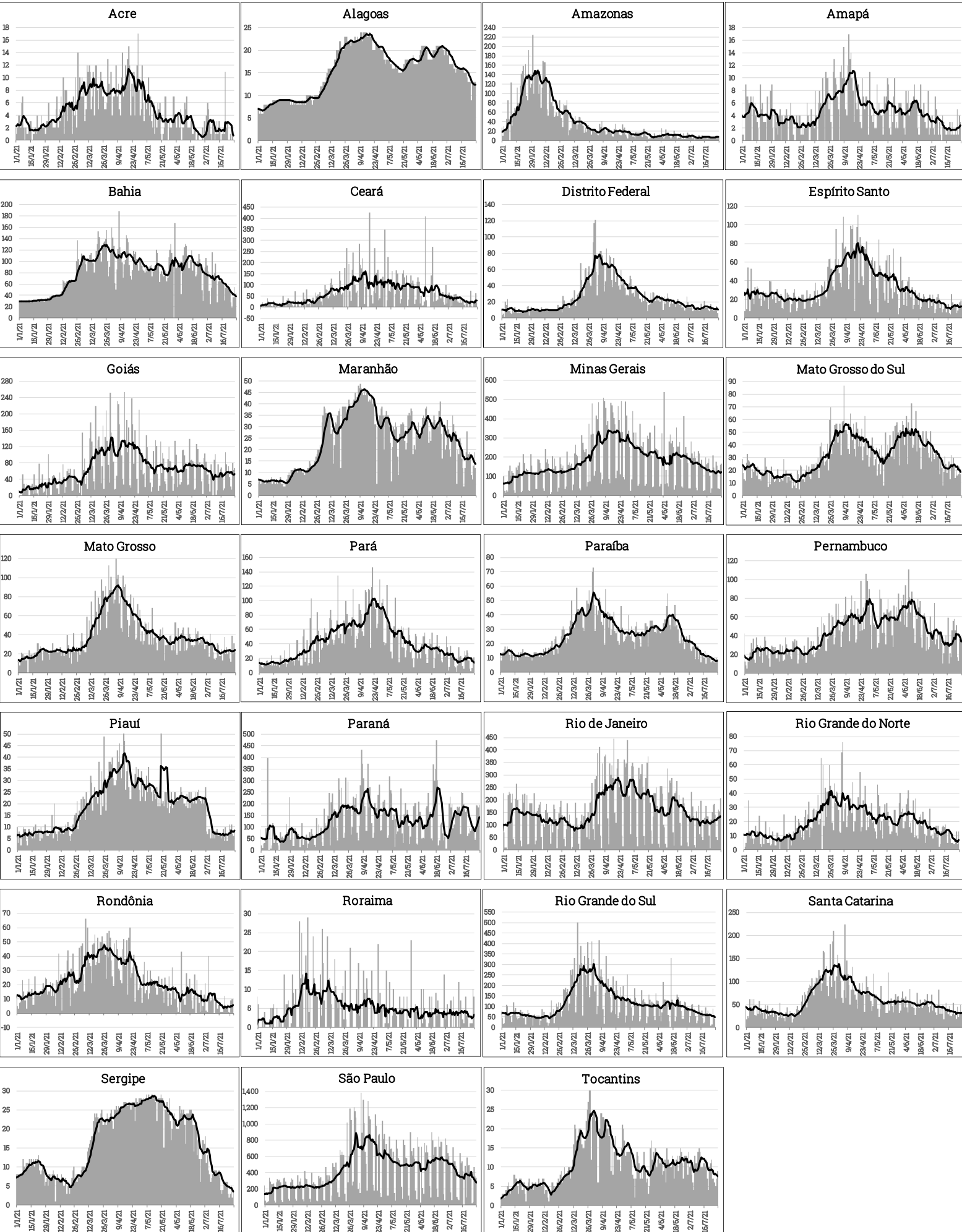


Fonte: Ministério da Saúde. Elaboração: XP Investimentos.

Mortes Diárias por Coronavírus - Brasil (Ministério da Saúde)

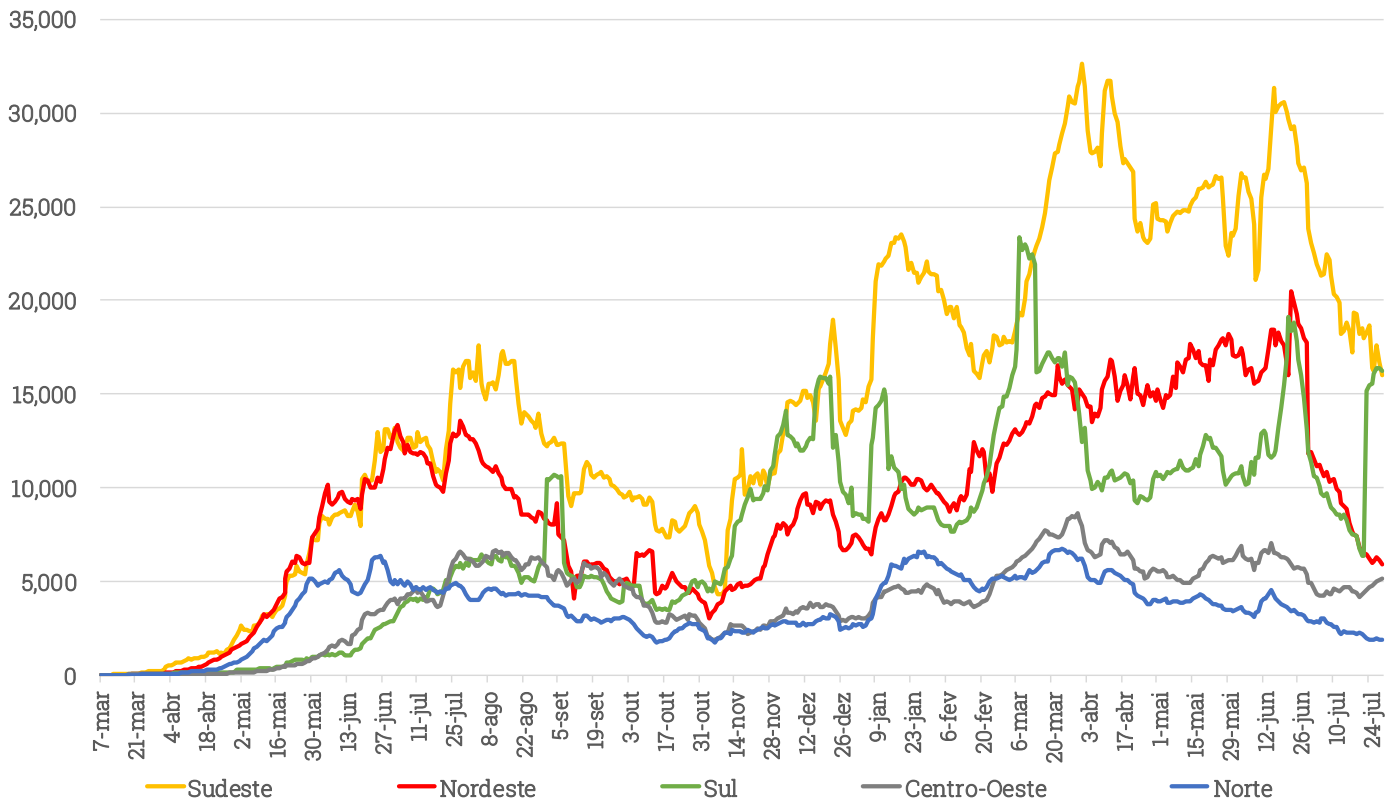


Fonte: Ministério da Saúde. Elaboração: XP Investimentos.



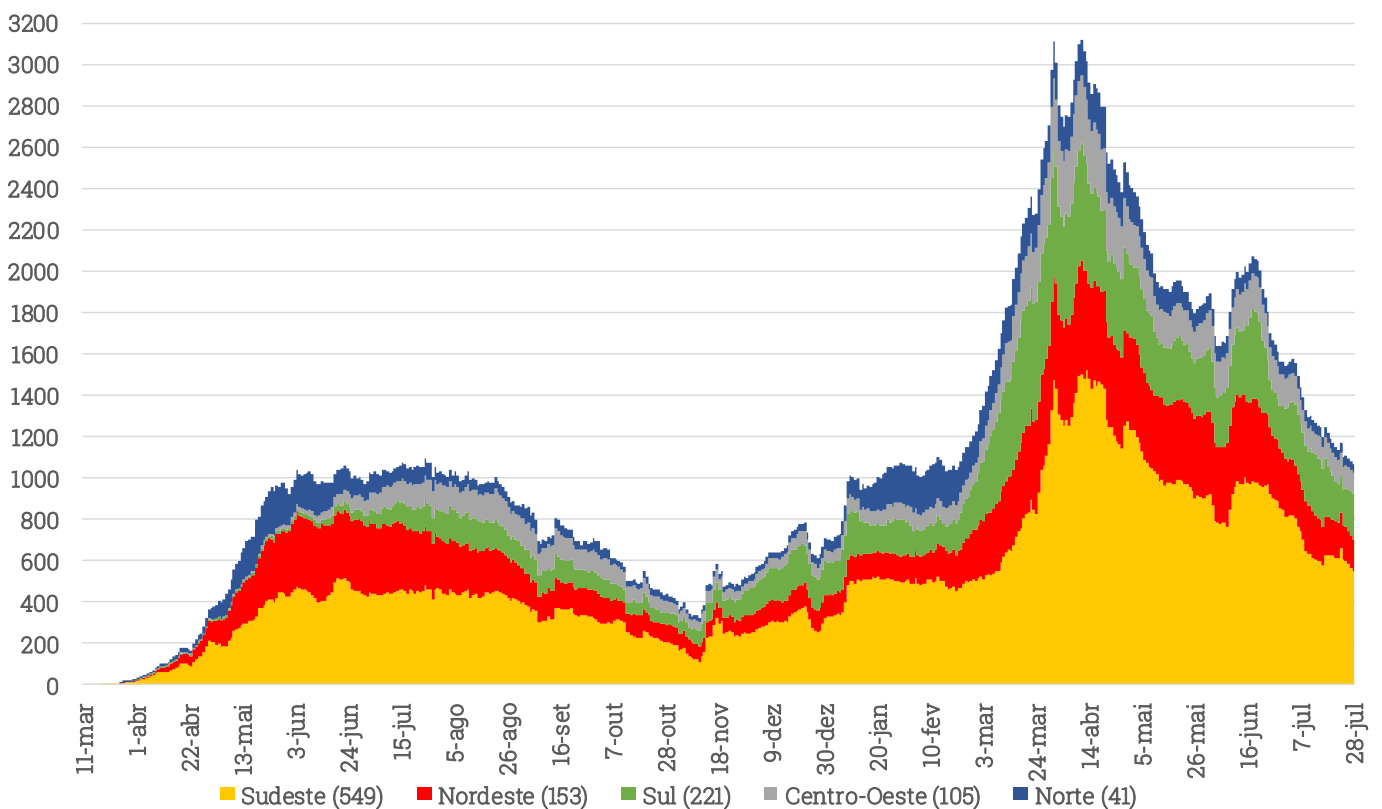
Regiões Brasileiras

Casos Diários de Coronavírus (Média Móvel 7 Dias) - Regiões Brasileiras (Min. da Saúde)



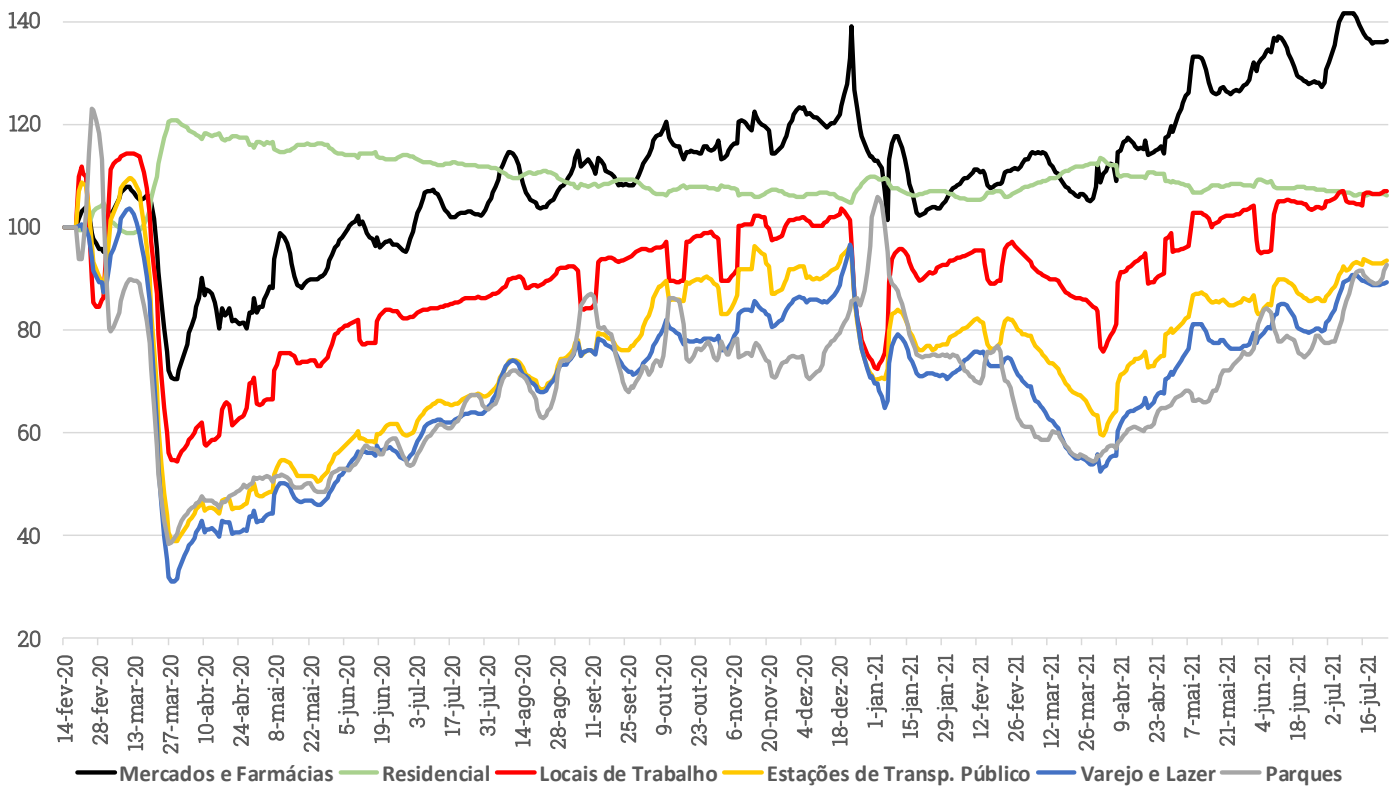
Fonte: Ministério da Saúde. Elaboração: XP Investimentos.

Mortes Diárias (Média Móvel 7 Dias) - Regiões Brasileiras (Min. da Saúde)



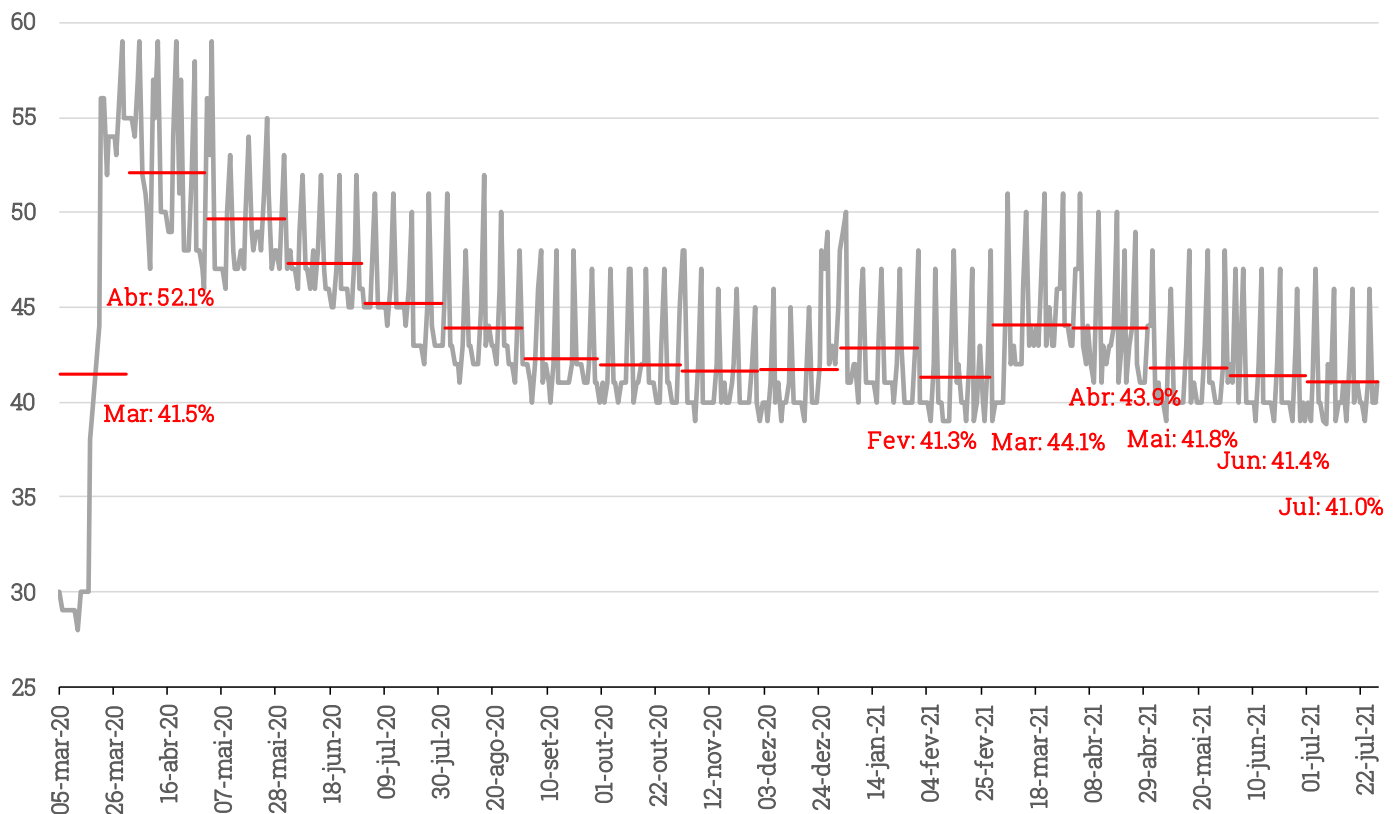
Isolamento Social

Google Mobilidade (mm7d. Pré-pandemia = 100)



Fonte: Google. Elaboração: XP Investimentos

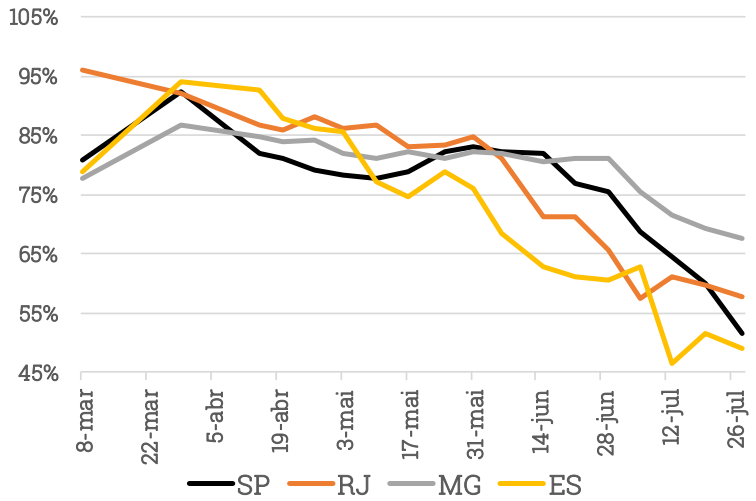
Estado de São Paulo: Isolamento Social (%)



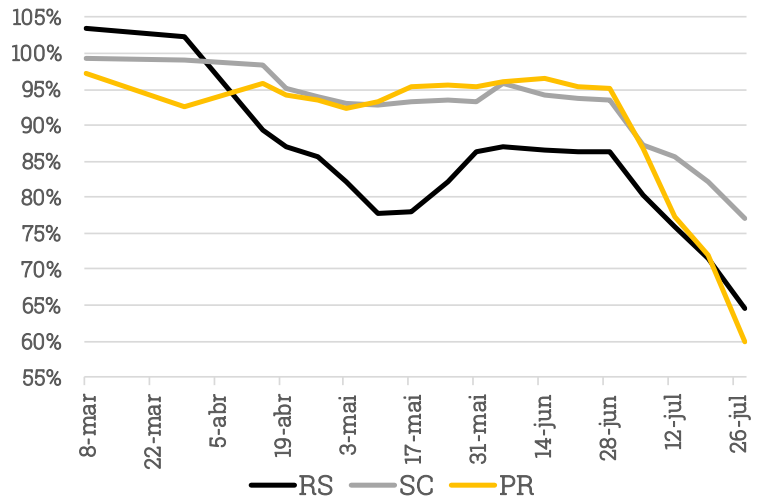
Fonte: Secretaria da Saúde do Estado de São Paulo. Elaboração: XP Investimentos

Ocupação de Leitos

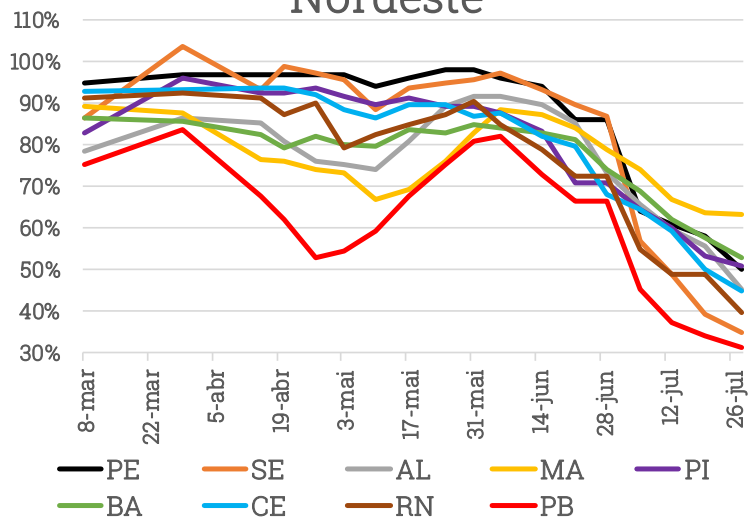
Sudeste



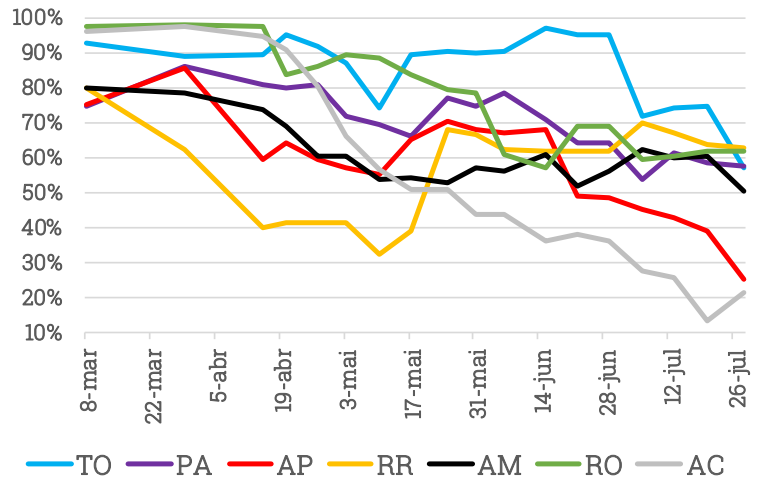
Sul



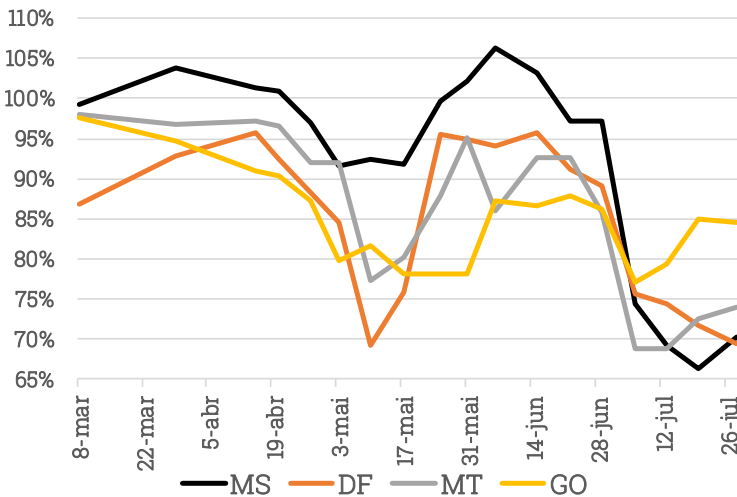
Nordeste



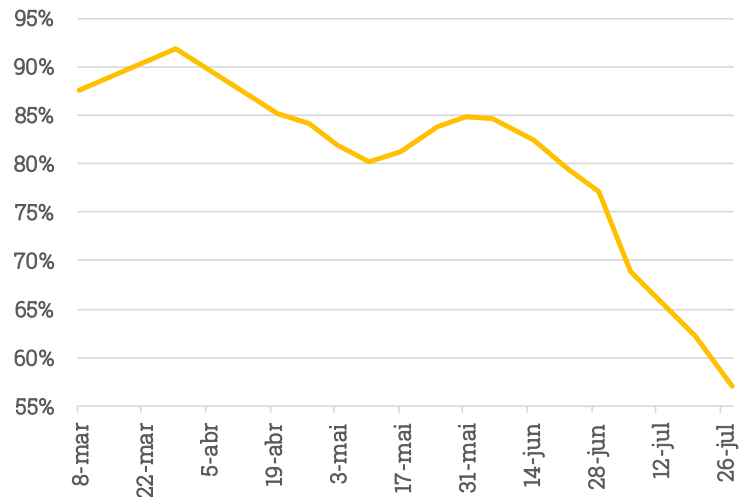
Norte



Centro-Oeste

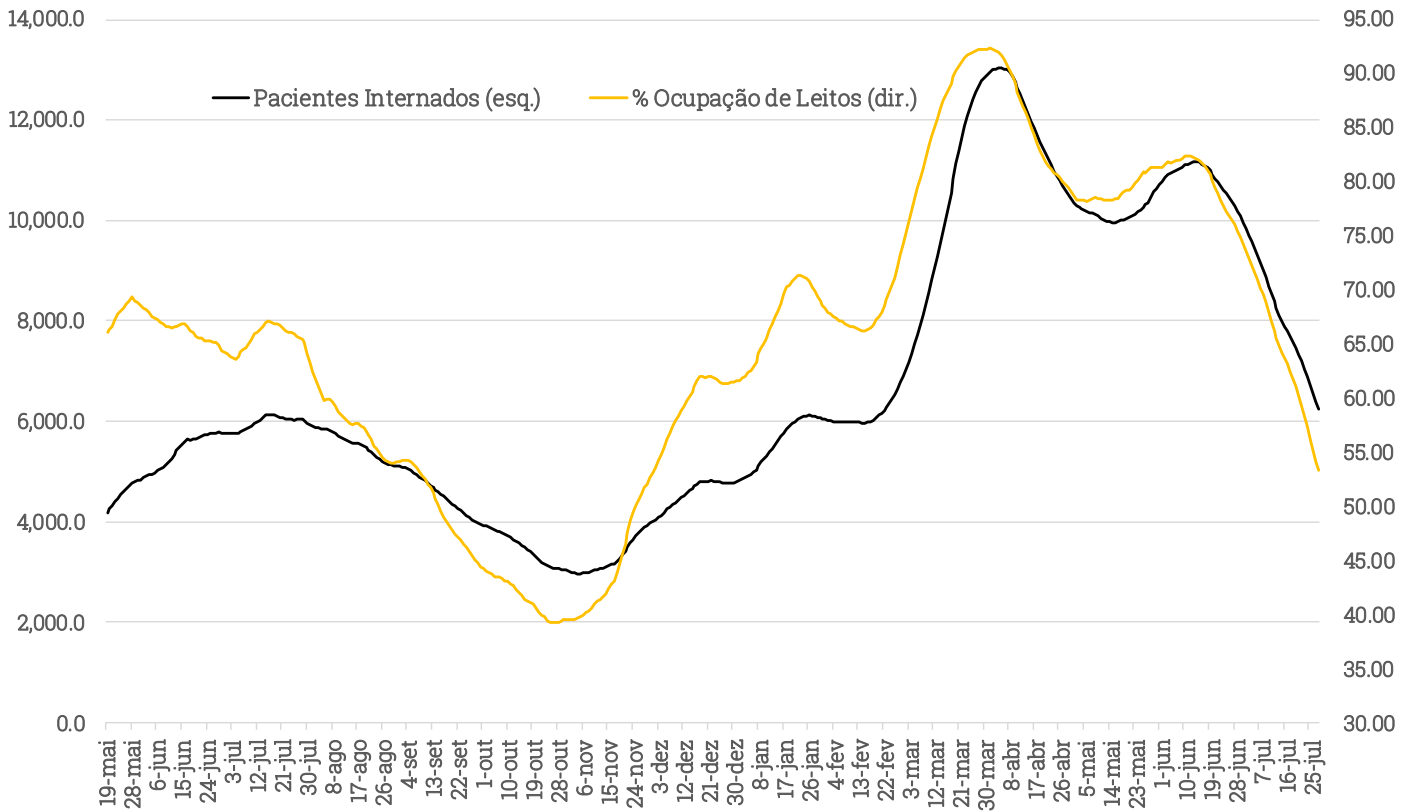


Brasil



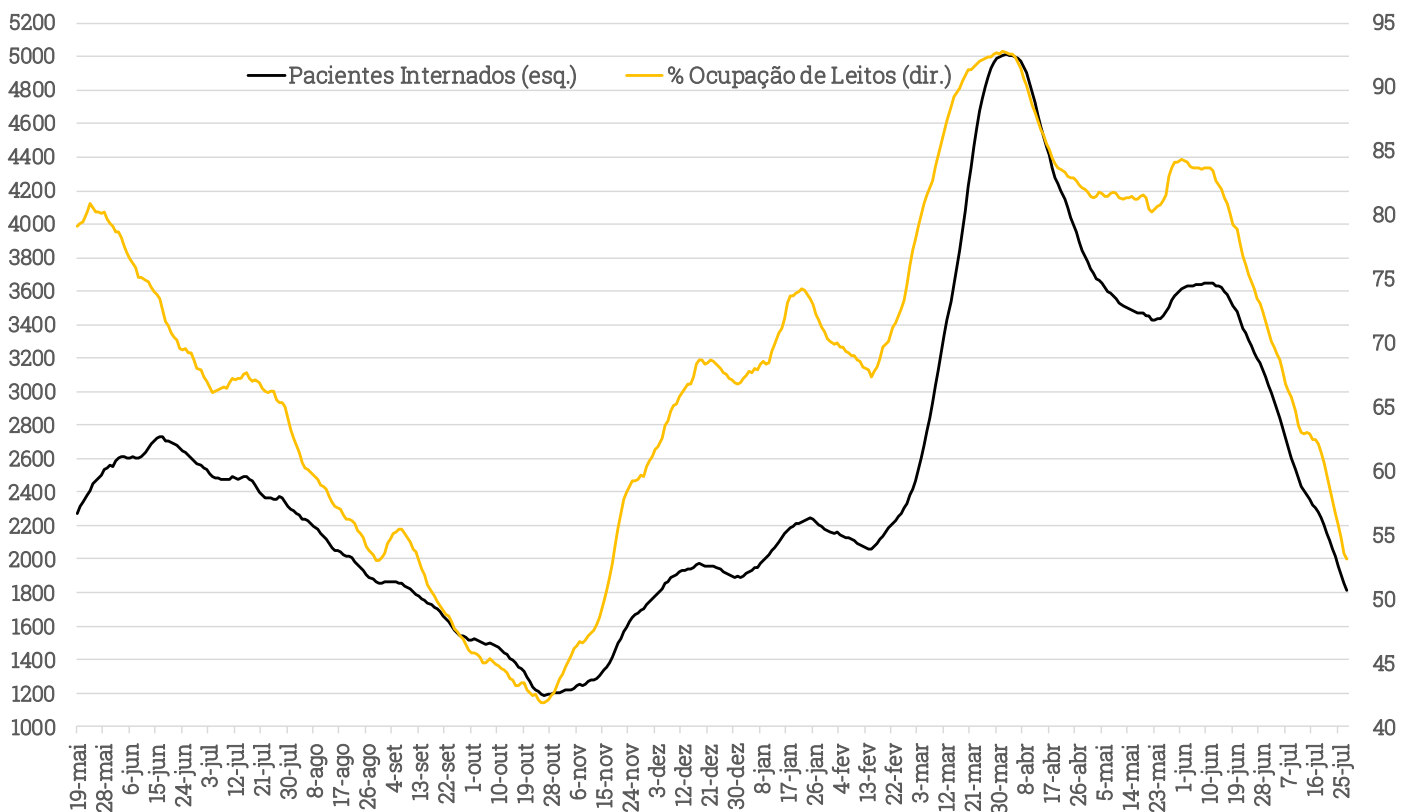
Internações em São Paulo

Internações em UTIs & %Ocupação de Leitos de Covid-19 (Estado de SP - mm7d)



Fonte: Secretaria de Saúde do Estado de São Paulo. Elaboração: XP Investimentos

Internações em UTIs & %Ocupação de Leitos de Covid-19 (SP Capital - mm7d)



Fonte: Secretaria de Saúde do Estado de São Paulo. Elaboração: XP Investimentos

Cronograma de Entregas de Vacinas

Cronograma de Entregas de Vacinas Covid-19* (milhões de doses)

Origem	Jan	Fev	Mar	Abr	Mai	Jun	Jul	Ago	set/out/nov/dez	Total
Fiocruz (+AstraZeneca Imp.)	2.0	2.0	2.8	19.2	21.7	18.3	12.0	10.0	134.0	222.0
Butantan (+Sinovac Imp.)	8.7	4.9	22.8	5.8	5.1	5.0	10.0	20.0	49.8	132.0
Covax (AstraZeneca)	-	-	1.0	-	4.1	-	4.0	-	5.1	14.2
Covax (Pfizer)	-	-	-	-	-	0.8	-	-	-	0.8
Covax (A Definir)	-	-	-	-	-	-	-	-	-	27.4
Pfizer	-	-	-	1.0	2.5	11.1	14.4	33.3	137.7	200.0
Janssen	-	-	-	-	-	4.8	-	-	36.2	41.0
Total	10.7	6.9	26.6	26.0	33.4	40.0	40.4	63.3	362.9	637.5

Fonte: Min. da Saúde. Elaboração: XP. *Atualizado em 21/07/21. Não considera Covaxin/Sputnik (30M doses). Não considera controle de qualidade

Vacinação no Brasil

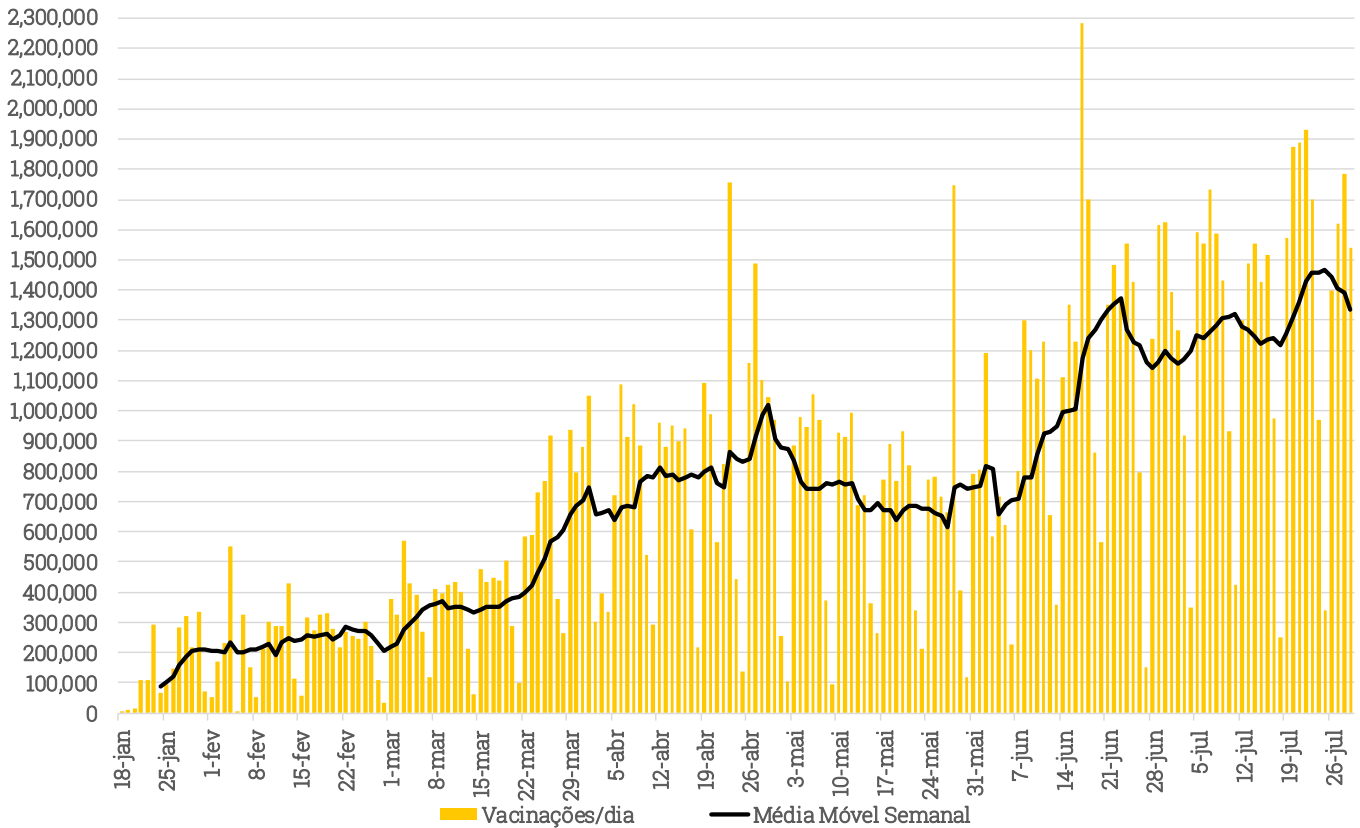
Vacinação nos Estados Brasileiros

UF	Doses Aplicadas (1ª Dose)	Doses Aplicadas (2ª Dose/Única)	Total de Doses Aplicadas	% Pop. com 1ª Dose	% Pop. com 2ª Dose/Única
SP	26,111,969	10,123,338	36,235,307	56.40%	21.87%
RS	6,112,946	2,961,133	9,074,079	53.52%	25.93%
PR	5,684,492	2,240,440	7,924,932	49.36%	19.45%
SC	3,570,368	1,422,138	4,992,506	49.23%	19.61%
MS	1,369,724	911,222	2,280,946	48.76%	32.44%
ES	1,967,046	820,523	2,787,569	48.39%	20.19%
MG	9,831,414	3,857,178	13,688,592	46.17%	18.11%
AM	1,917,329	666,048	2,583,377	45.56%	15.83%
RJ	7,595,679	3,234,711	10,830,390	43.73%	18.62%
SE	1,013,956	365,857	1,379,813	43.73%	15.78%
PE	4,198,645	1,605,328	5,803,973	43.65%	16.69%
RN	1,539,843	580,795	2,120,638	43.57%	16.43%
PB	1,727,632	685,642	2,413,274	42.77%	16.98%
DF	1,301,666	562,587	1,864,253	42.61%	18.42%
GO	3,002,475	1,155,291	4,157,766	42.20%	16.24%
BA	6,220,316	2,737,344	8,957,660	41.67%	18.34%
CE	3,822,110	1,595,417	5,417,527	41.61%	17.37%
AC	365,692	126,576	492,268	40.89%	14.15%
PI	1,337,731	548,077	1,885,808	40.77%	16.70%
MT	1,430,732	529,282	1,960,014	40.57%	15.01%
MA	2,856,454	1,013,271	3,869,725	40.14%	14.24%
RO	698,634	242,617	941,251	38.88%	13.50%
TO	603,471	220,899	824,370	37.94%	13.89%
AL	1,268,262	512,557	1,780,819	37.85%	15.29%
RR	233,942	79,019	312,961	37.05%	12.52%
PA	3,058,619	1,469,337	4,527,956	35.19%	16.90%
AP	281,753	94,059	375,812	32.69%	10.91%
Brasil	99,122,900	40,360,686	139,483,586	46.81%	19.06%

Fontes: Coronavirusbrasil. Elaboração: XP Investimentos

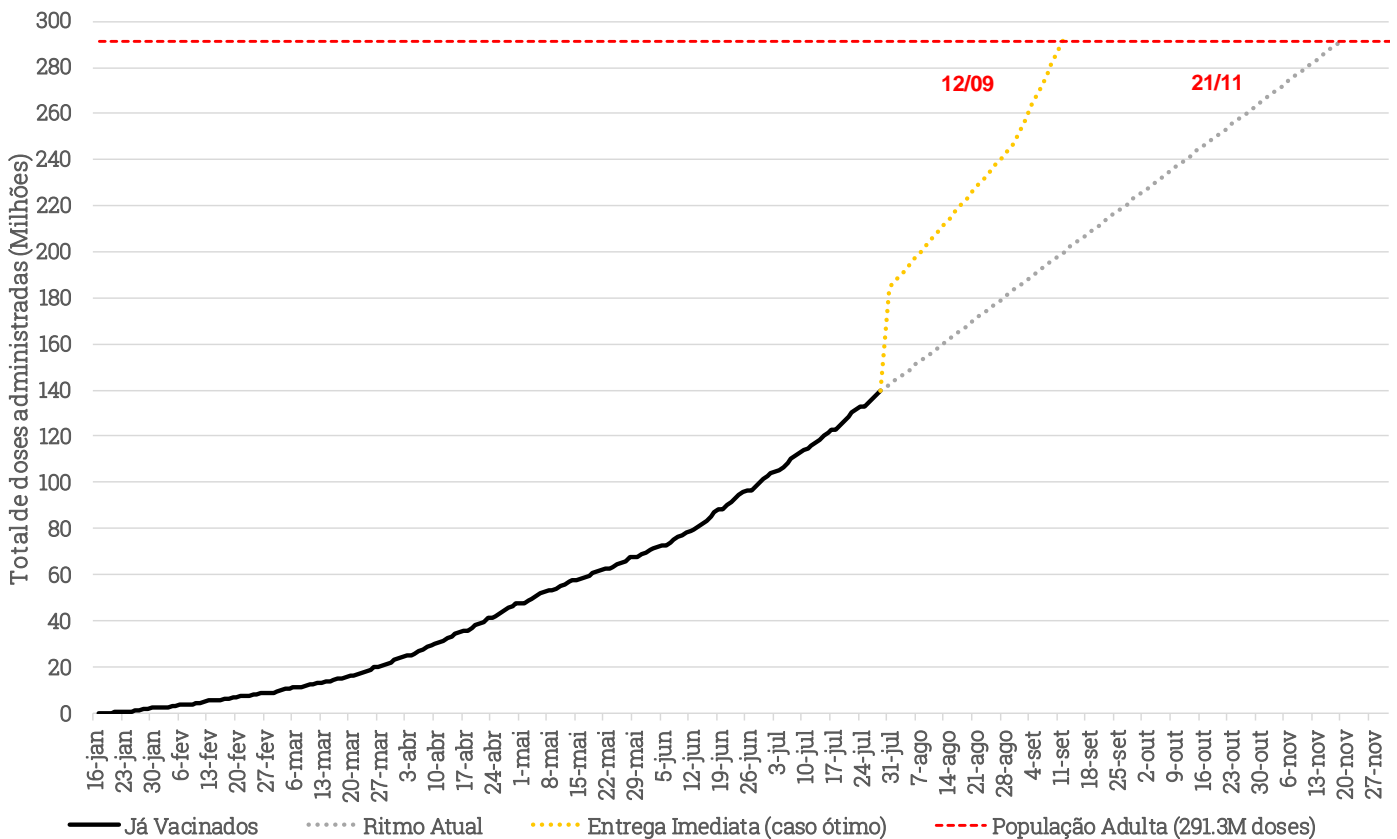
Vacinação no Brasil

Vacinação Diária: Brasil (Coronavirusbral)



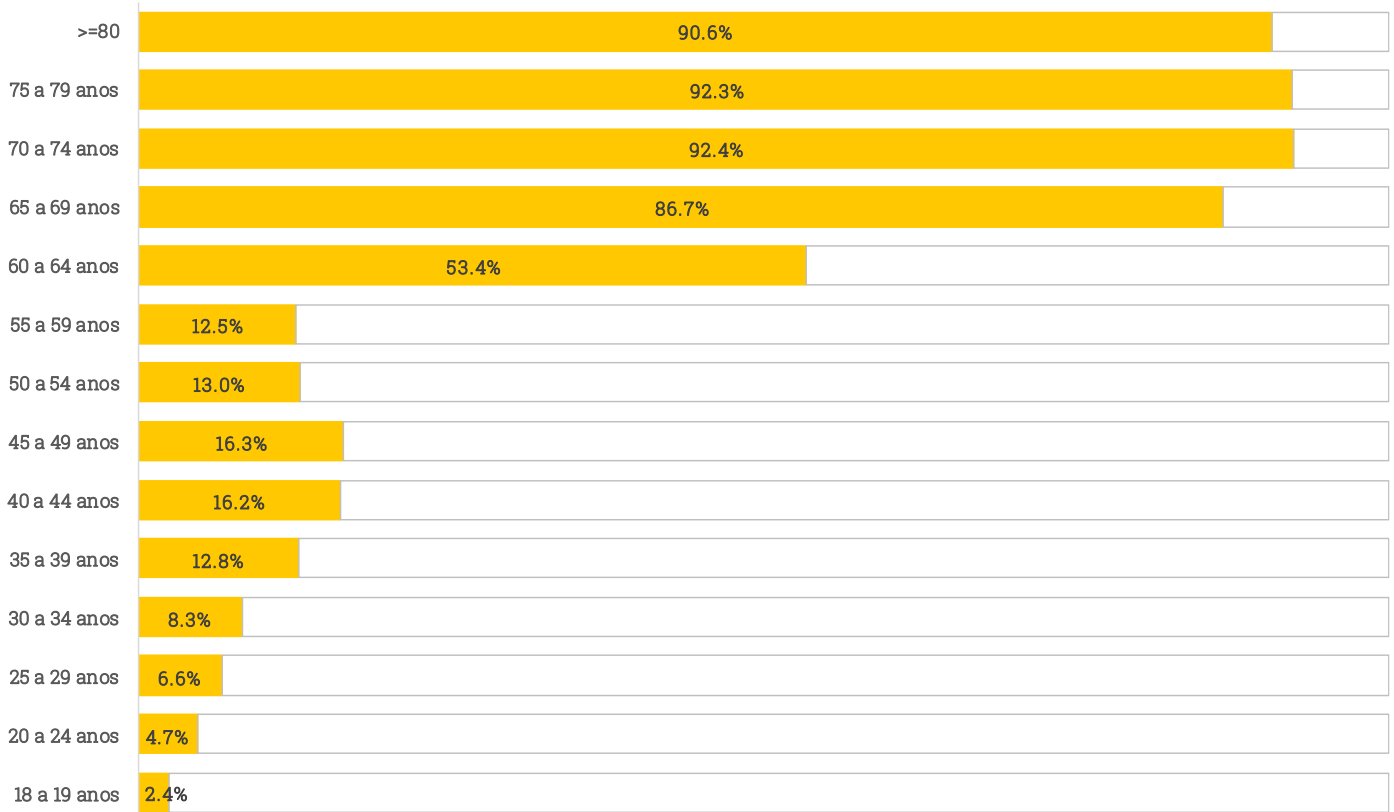
Fontes: Coronavirusbral. Elaboração: XP

Ritmo de Vacinação no Brasil (Coronavirusbral)



Fonte: Coronavirusbral. Elaboração: XP

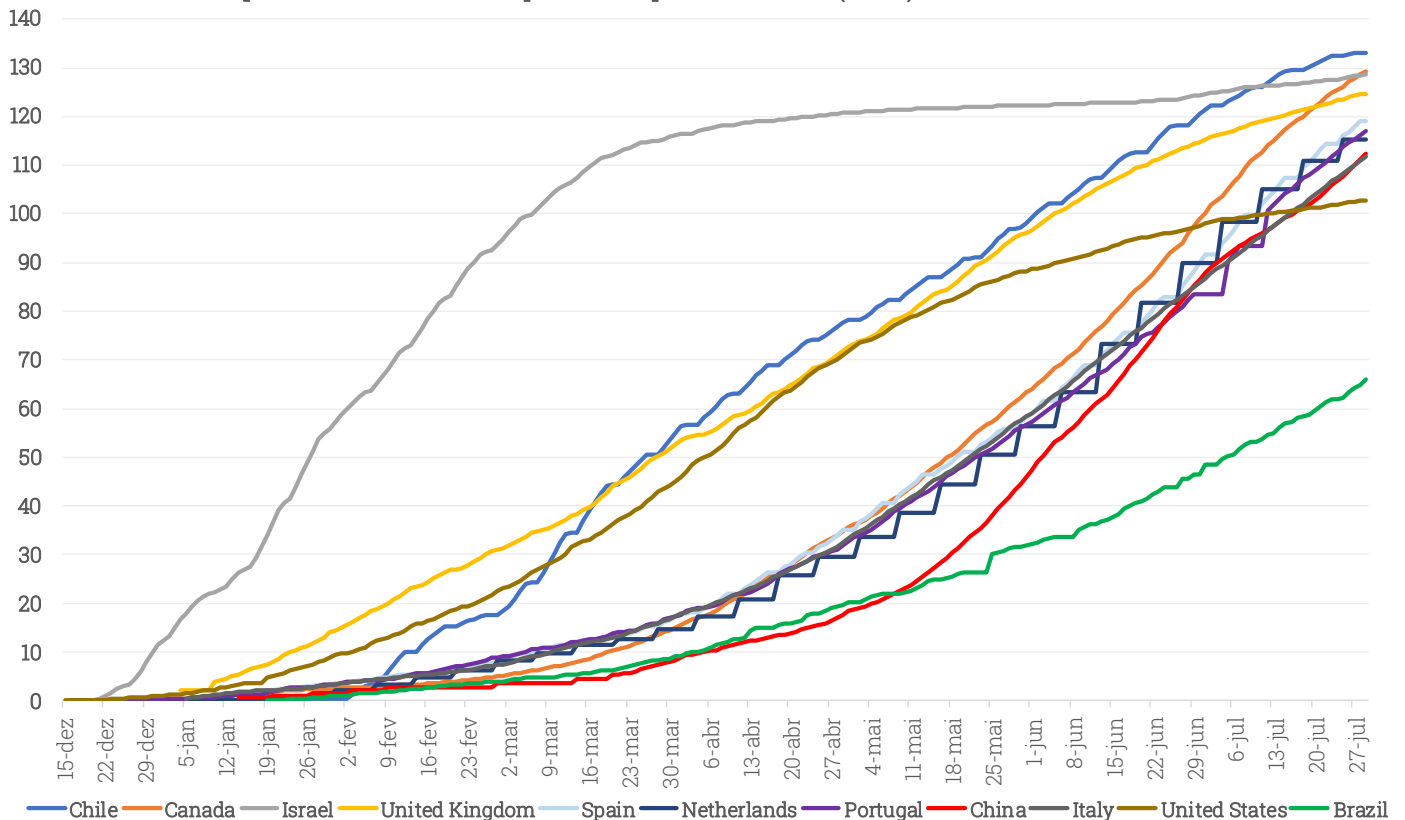
Percentual da População com 2 doses ou Dose Única



Fonte: Ministério da Saúde. Elaboração: XP

Vacinação no Mundo

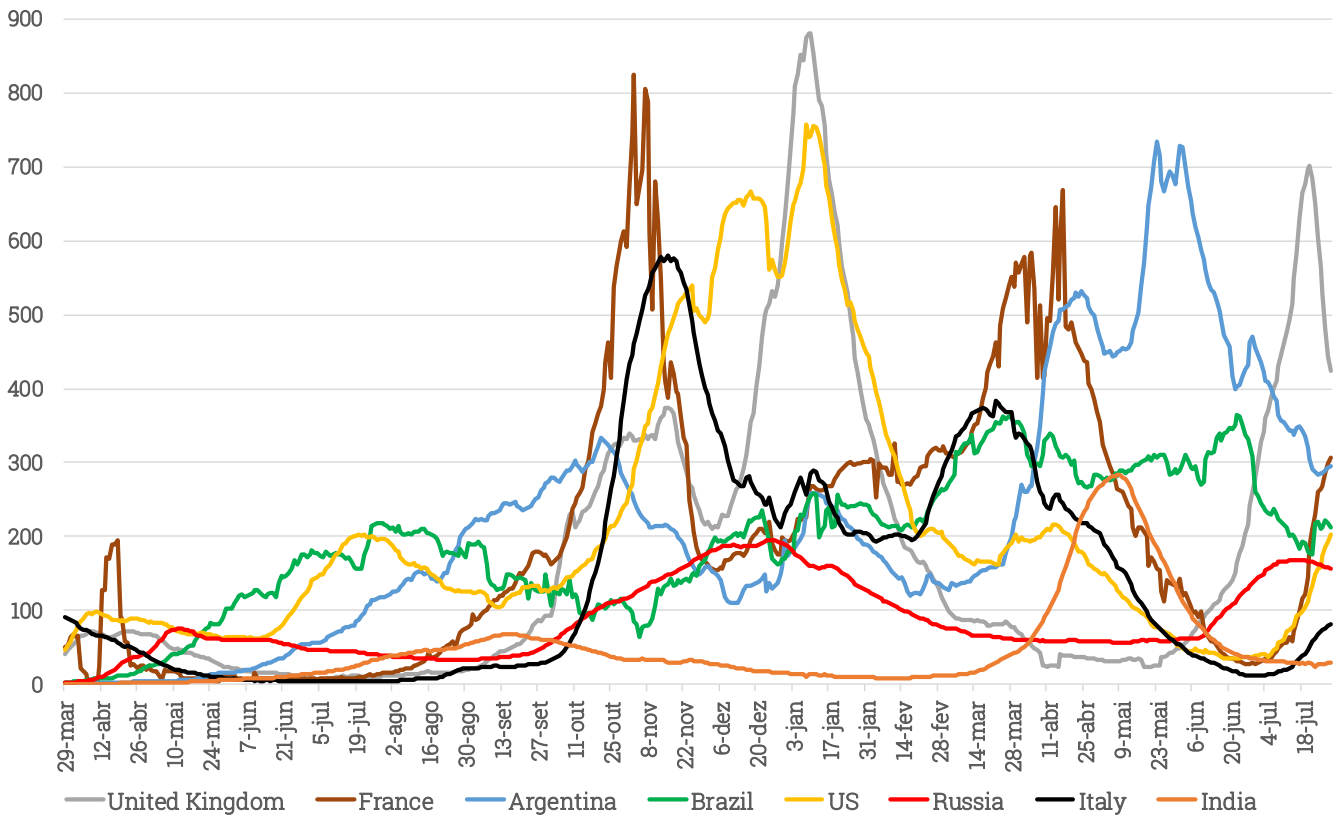
Doses de Vacina por 100 Habitantes- 10 primeiros países + Brasil (OWD)



Fonte: Our World in Data. Elaboração: XP

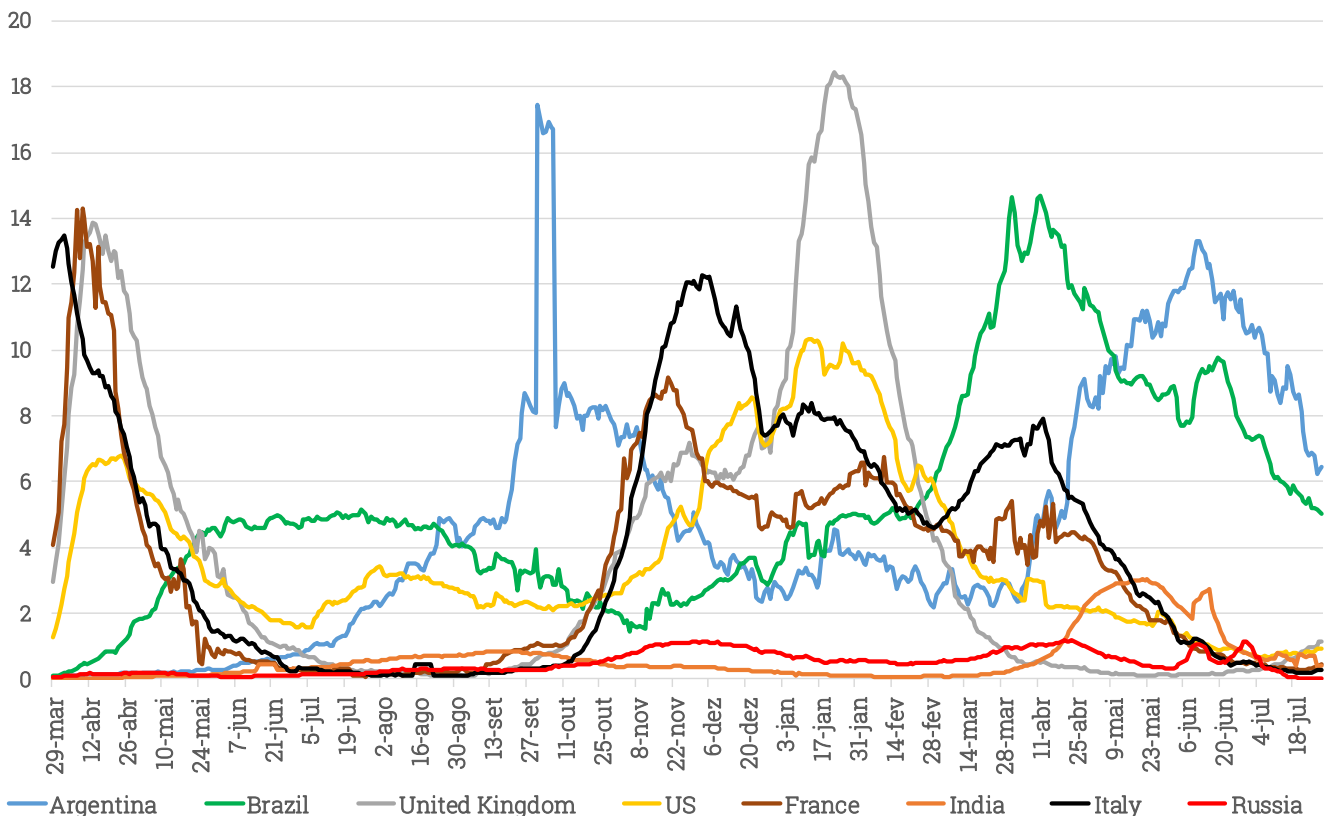
Países Selecionados

Novos Casos por Milhão de Habitantes (Média Móvel 7 Dias) - Principais Países (Johns Hopkins)



Fonte: JHU e ONU. Elaboração: XP Investimentos.

Novas Mortes por Milhão de Habitantes (Média Móvel 7 Dias)- Principais Países (JHU)



Fonte: JHU e ONU. Elaboração: XP Investimentos

XP MACRO STRATEGY & POLITICAL ANALYSIS

Richard Back
Head Political Analyst

Paulo Gama
Political Analyst

Victor Scalet
Political Analyst & Macro Strategist

Debora Santos
Political Analyst

Alexandre Maluf
Political Analyst

Marcelo Freller
Strategist

Junia Gama
Political Analyst

Sol Azcune
Political Analyst



@orichardback



@opaulogama



XP Frequência Política

Disclaimer

This material was prepared by XP Investimentos CCTVM S.A. (“XP Investimentos” ou “XP”) and should not be considered as a research material for the purpose of CVM Instruction 483/2010. All opinions, projections and estimates constitute the judgment of the author as of the date of transmission and these, plus any other information contained herein, are subject to change without notice. Nothing in this report constitutes a representation that any investment strategy or recommendation contained herein is suitable or appropriate to a recipient’s individual circumstances or otherwise constitutes a personal recommendation. This report is published solely for information purposes, it does not constitute an advertisement and is not to be construed as a solicitation or an offer to buy or sell any securities or related financial instruments. This material (including any attachments) is confidential, may contain proprietary or privileged information and is intended for the named recipient(s) only. XP Investimentos, affiliates, parentes, shareholders, director and officers does not provide any support, financially or otherwise to any political parties, political campaigns, candidates, or public officials.