



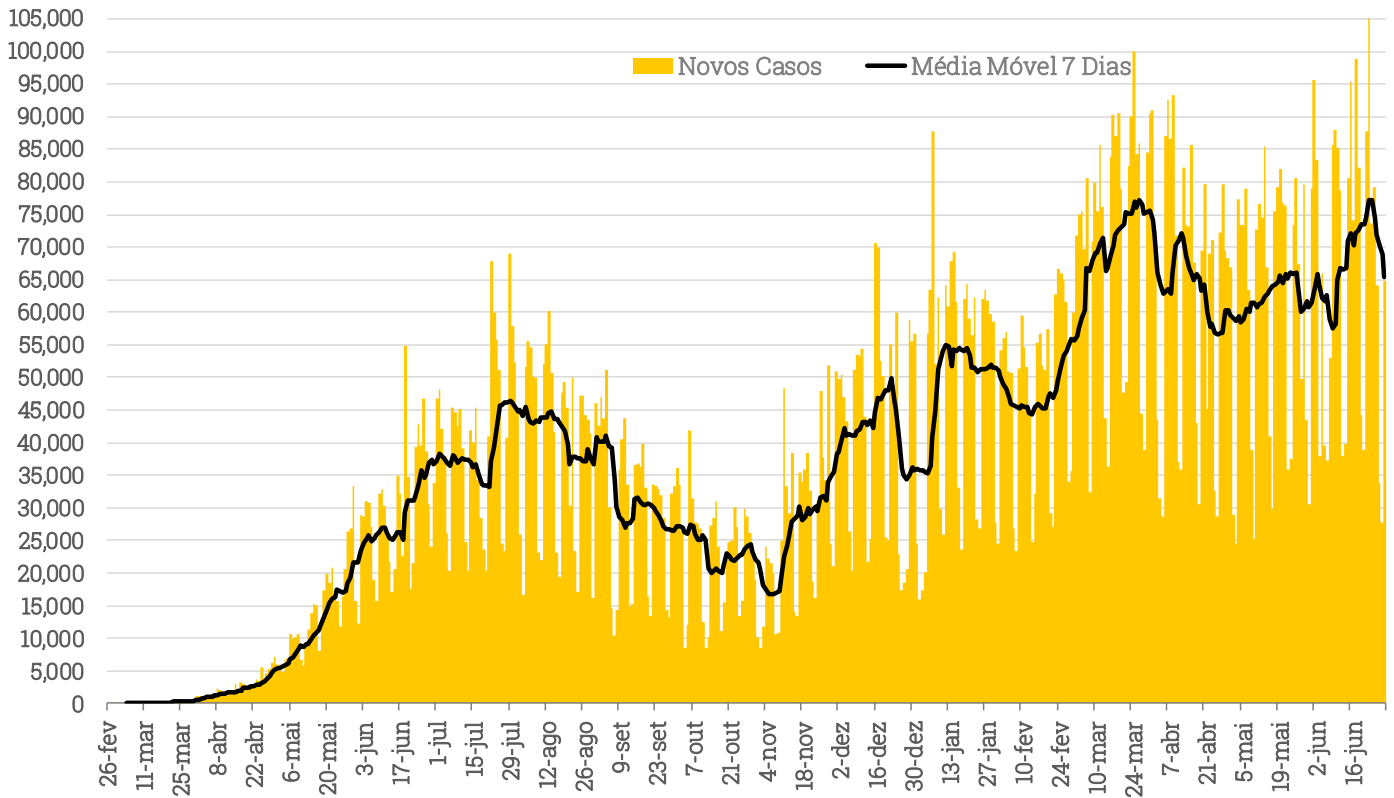
Coronavírus: Update Diário

30 de Junho de 2021

 investimentos

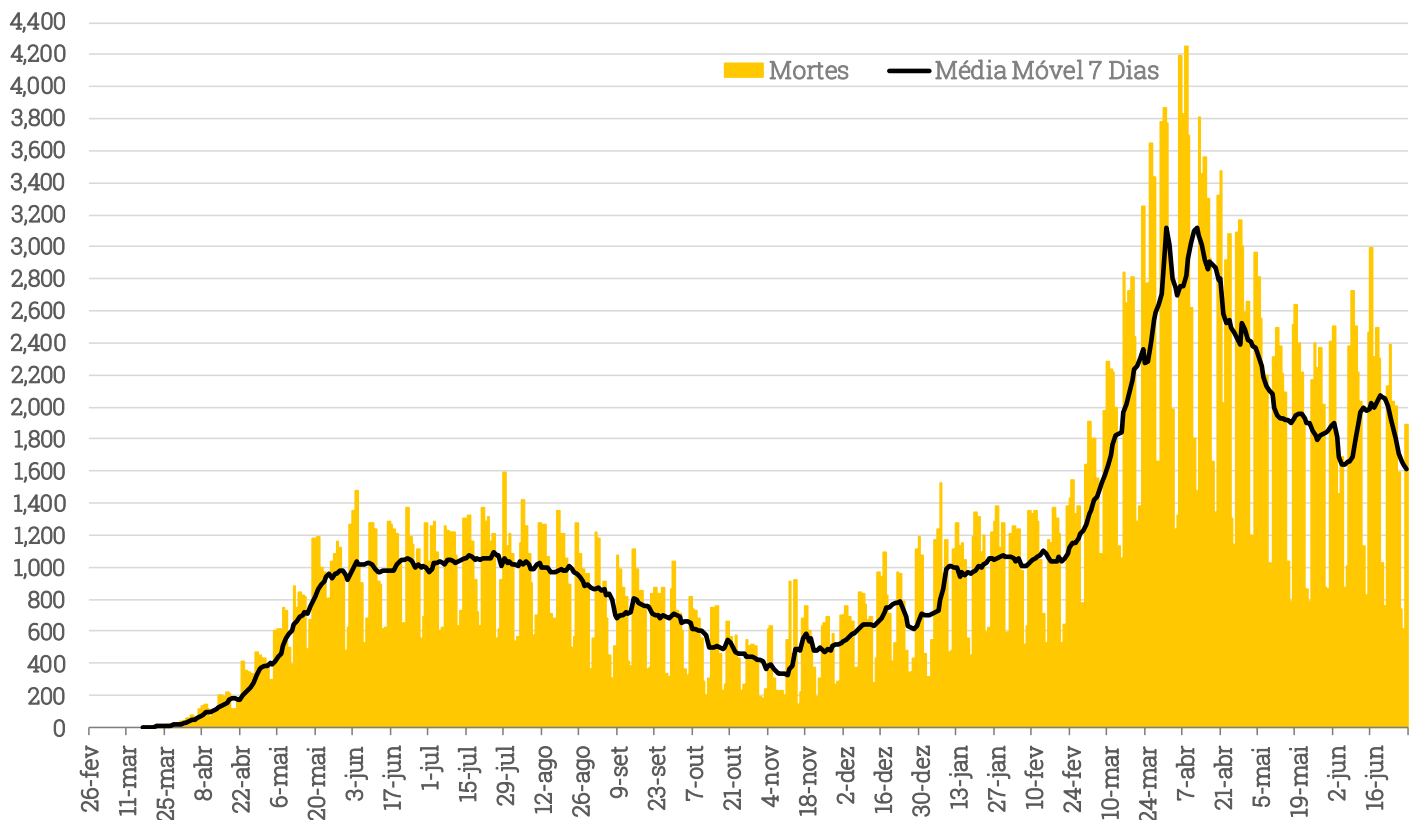
Brasil

Casos Diários de Coronavírus - Brasil (Ministério da Saúde)

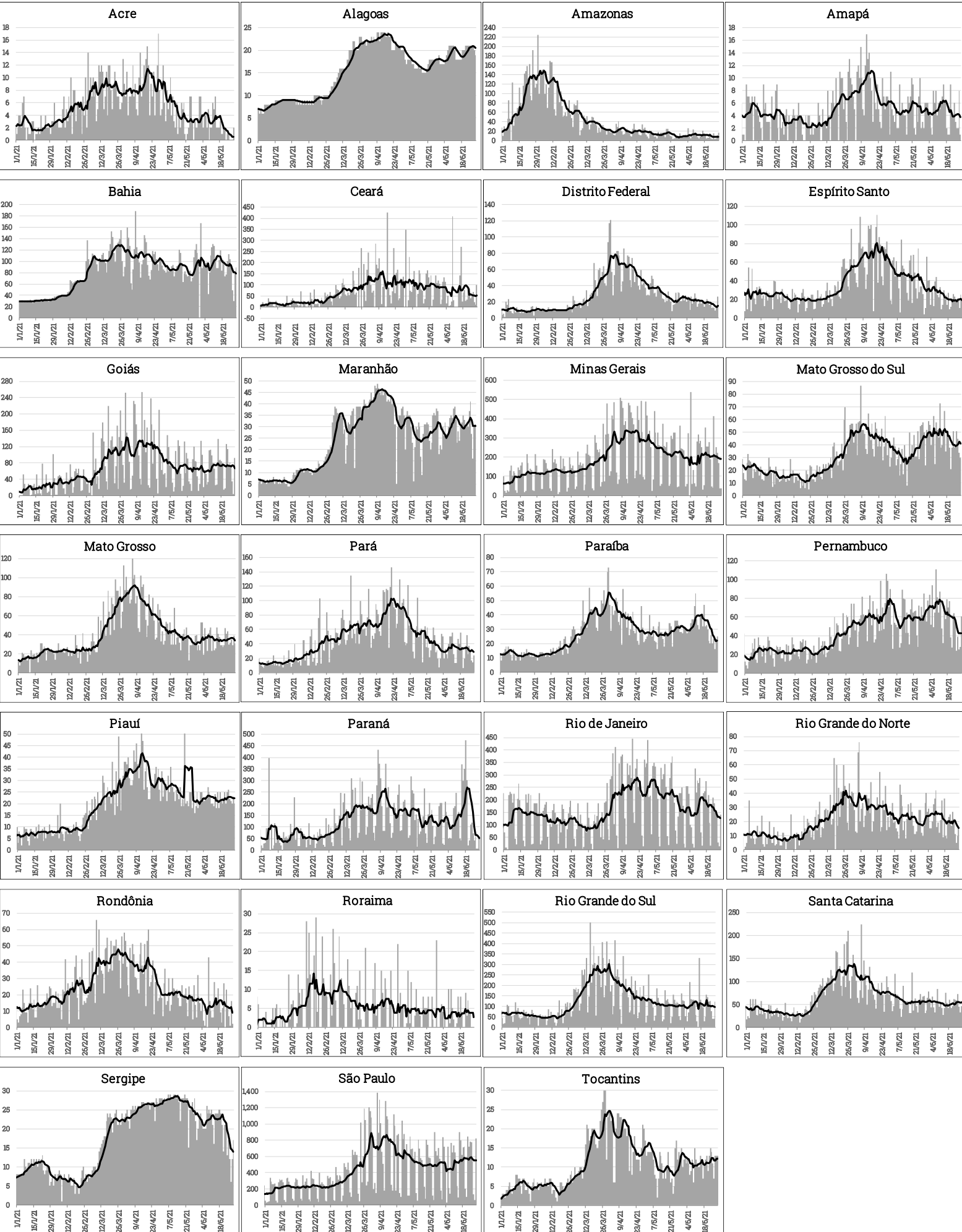


Fonte: Ministério da Saúde. Elaboração: XP Investimentos.

Mortes Diárias por Coronavírus - Brasil (Ministério da Saúde)

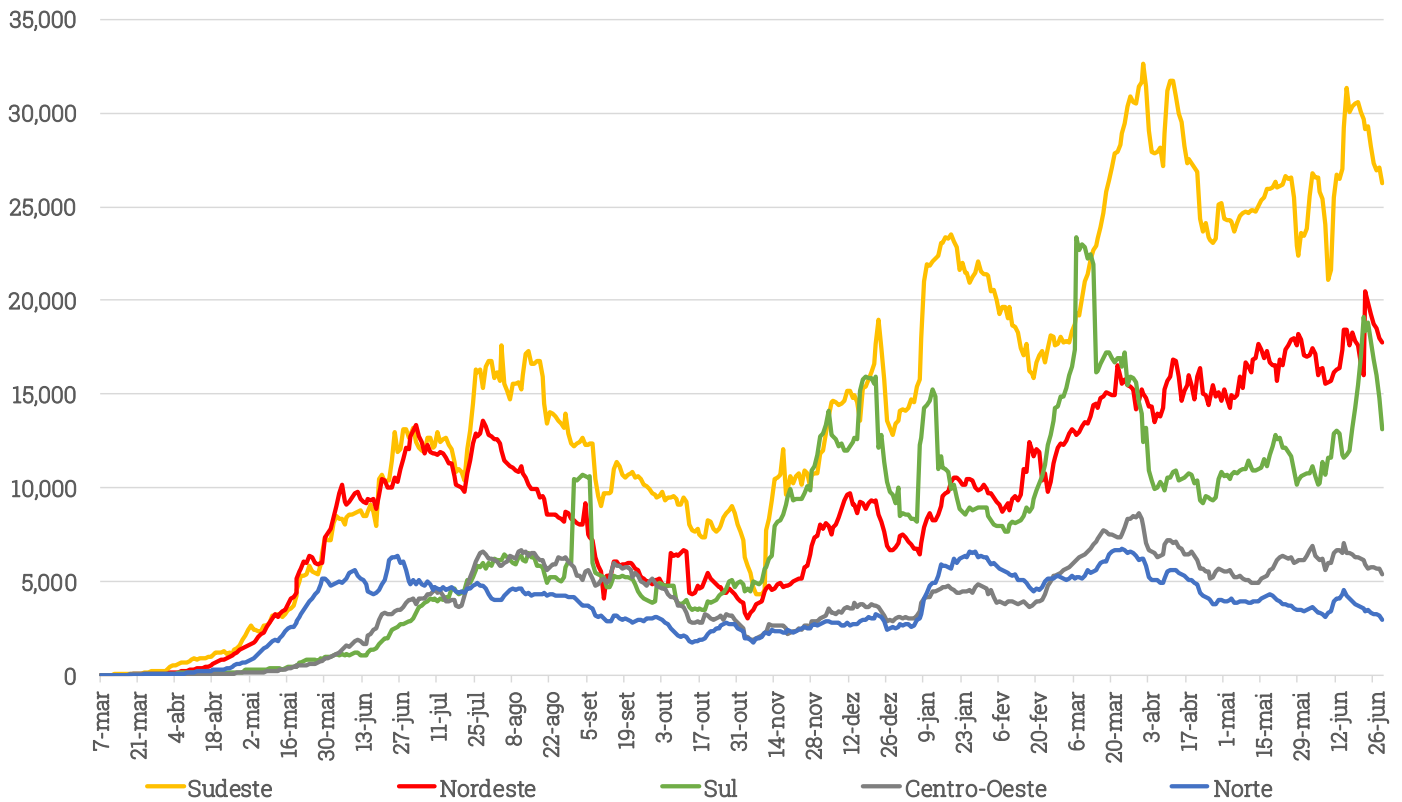


Fonte: Ministério da Saúde. Elaboração: XP Investimentos.



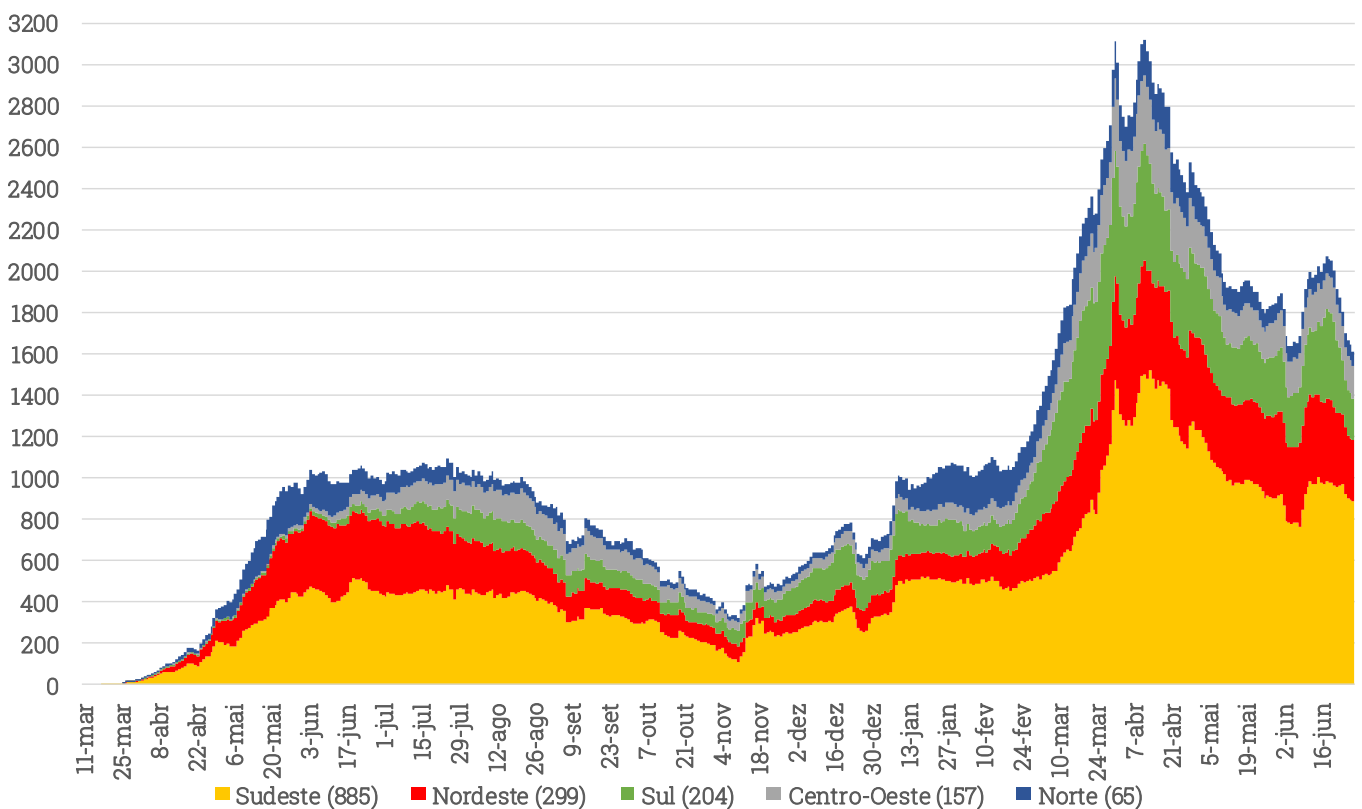
Regiões Brasileiras

Casos Diários de Coronavírus (Média Móvel 7 Dias) - Regiões Brasileiras (Min. da Saúde)



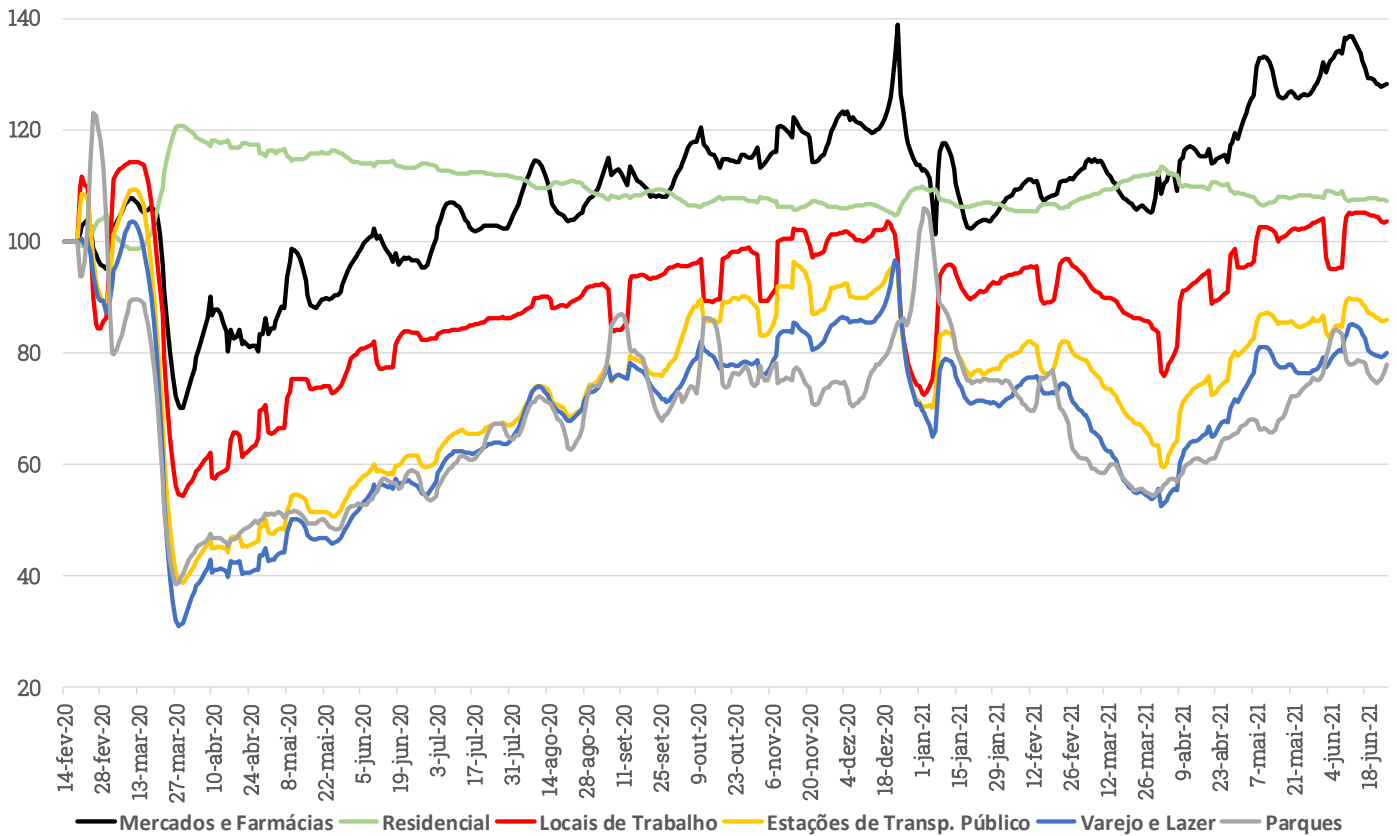
Fonte: Ministério da Saúde. Elaboração: XP Investimentos.

Mortes Diárias (Média Móvel 7 Dias) - Regiões Brasileiras (Min. da Saúde)



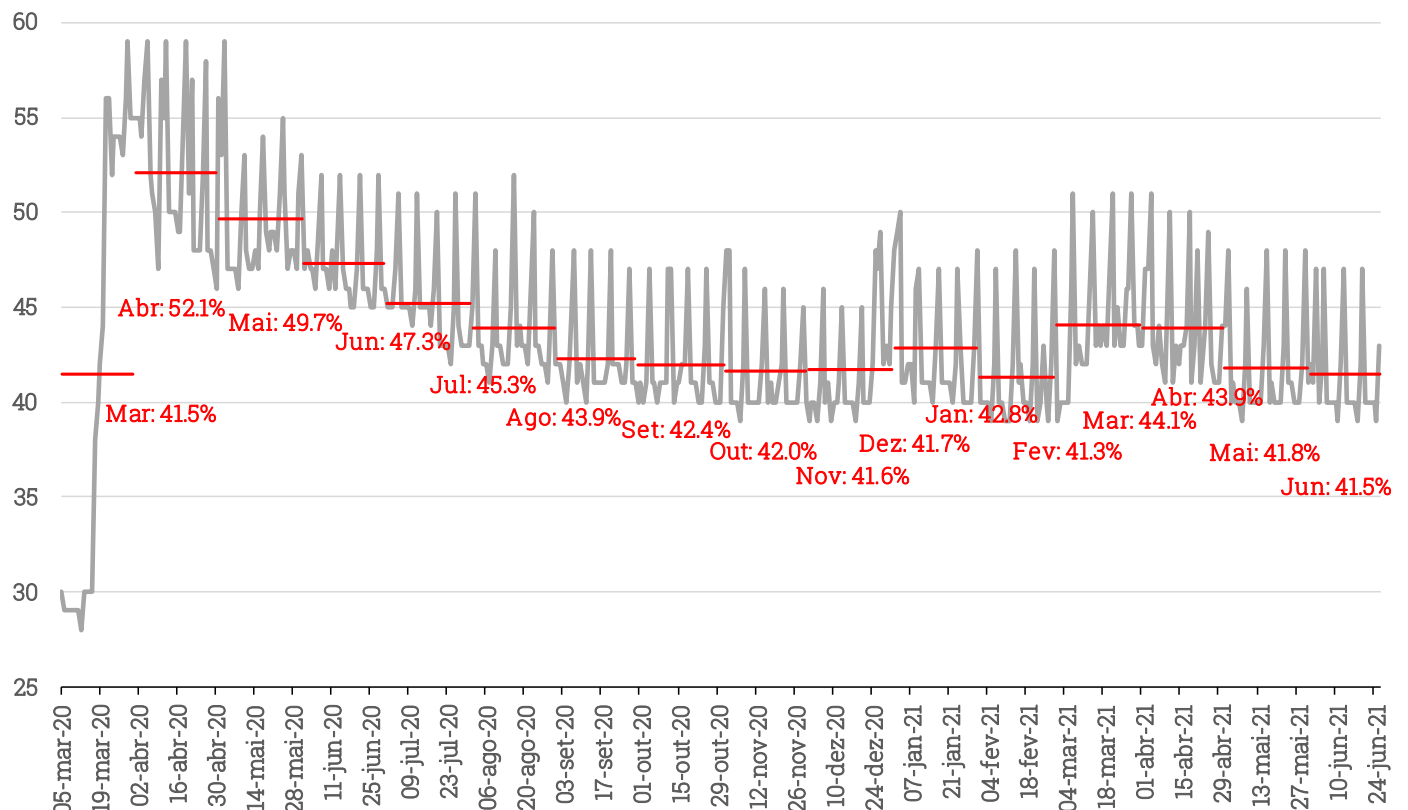
Isolamento Social

Google Mobilidade (mm7d. Pré-pandemia = 100)



Fonte: Google. Elaboração: XP Investimentos

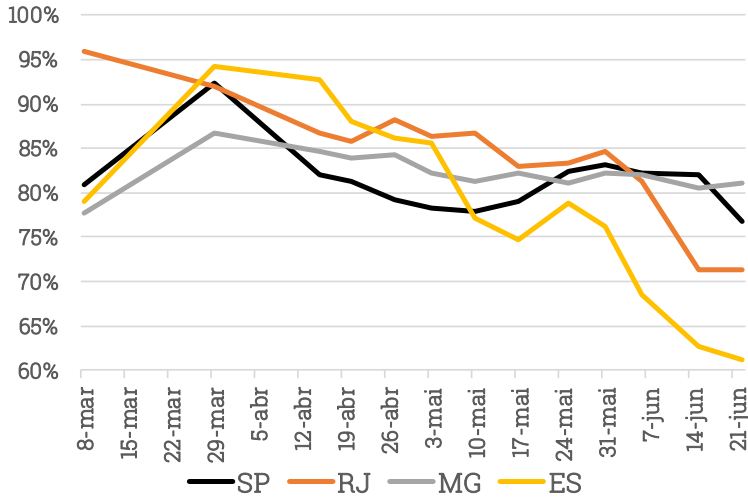
Estado de São Paulo: Isolamento Social (%)



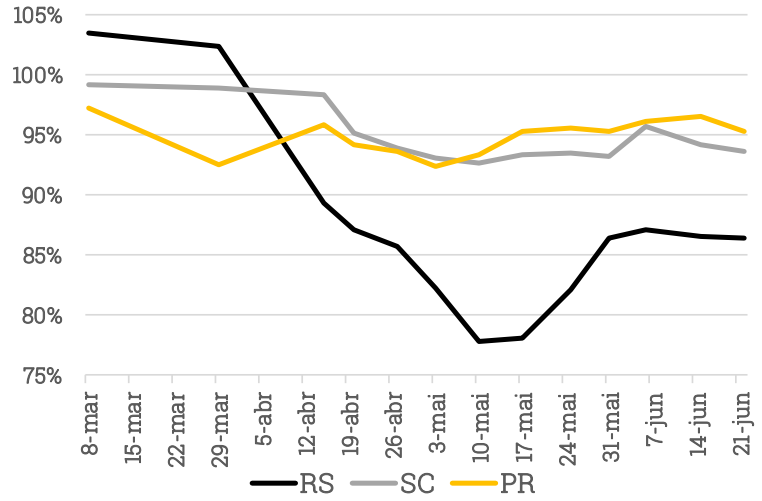
Fonte: Secretaria da Saúde do Estado de São Paulo. Elaboração: XP Investimentos

Ocupação de Leitos

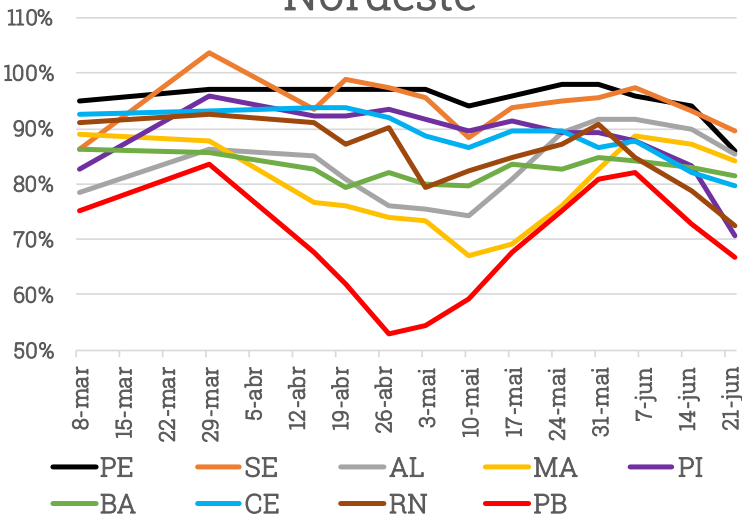
Sudeste



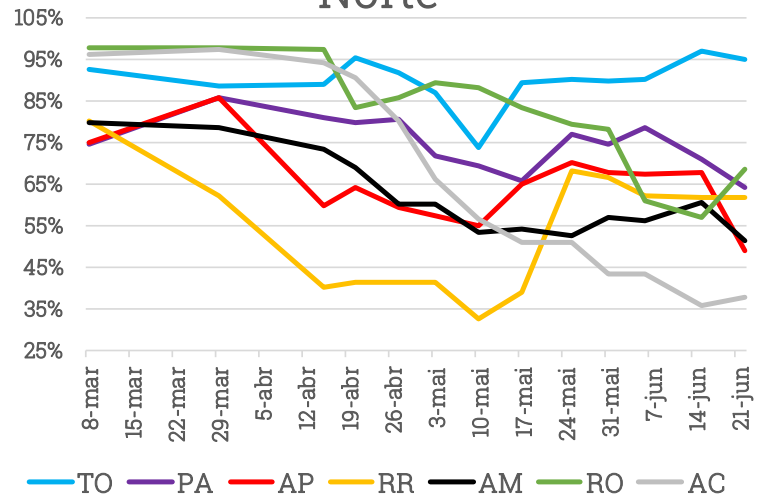
Sul



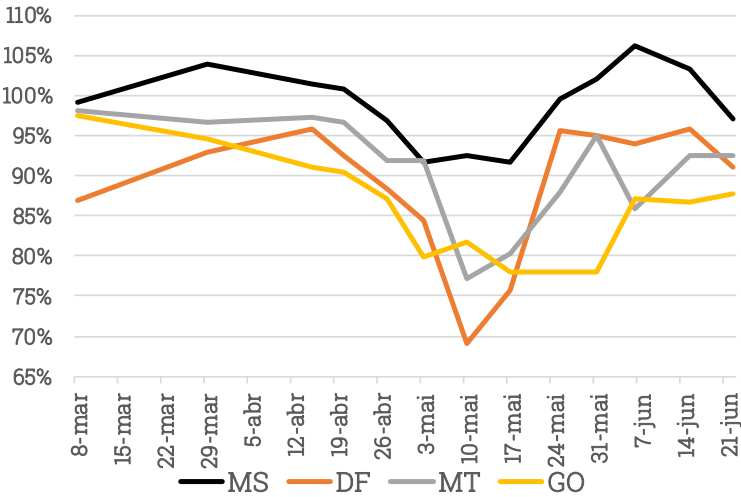
Nordeste



Norte

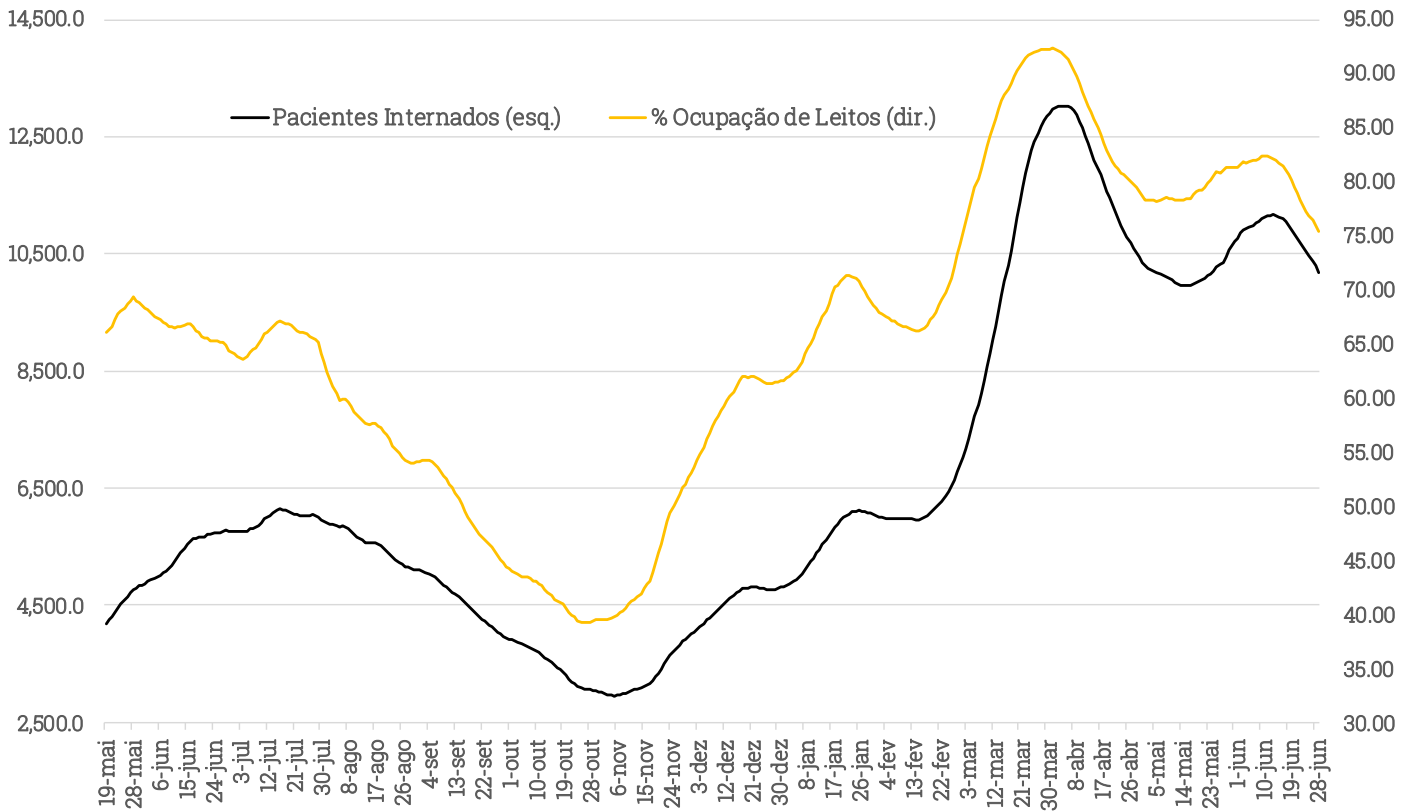


Centro-Oeste



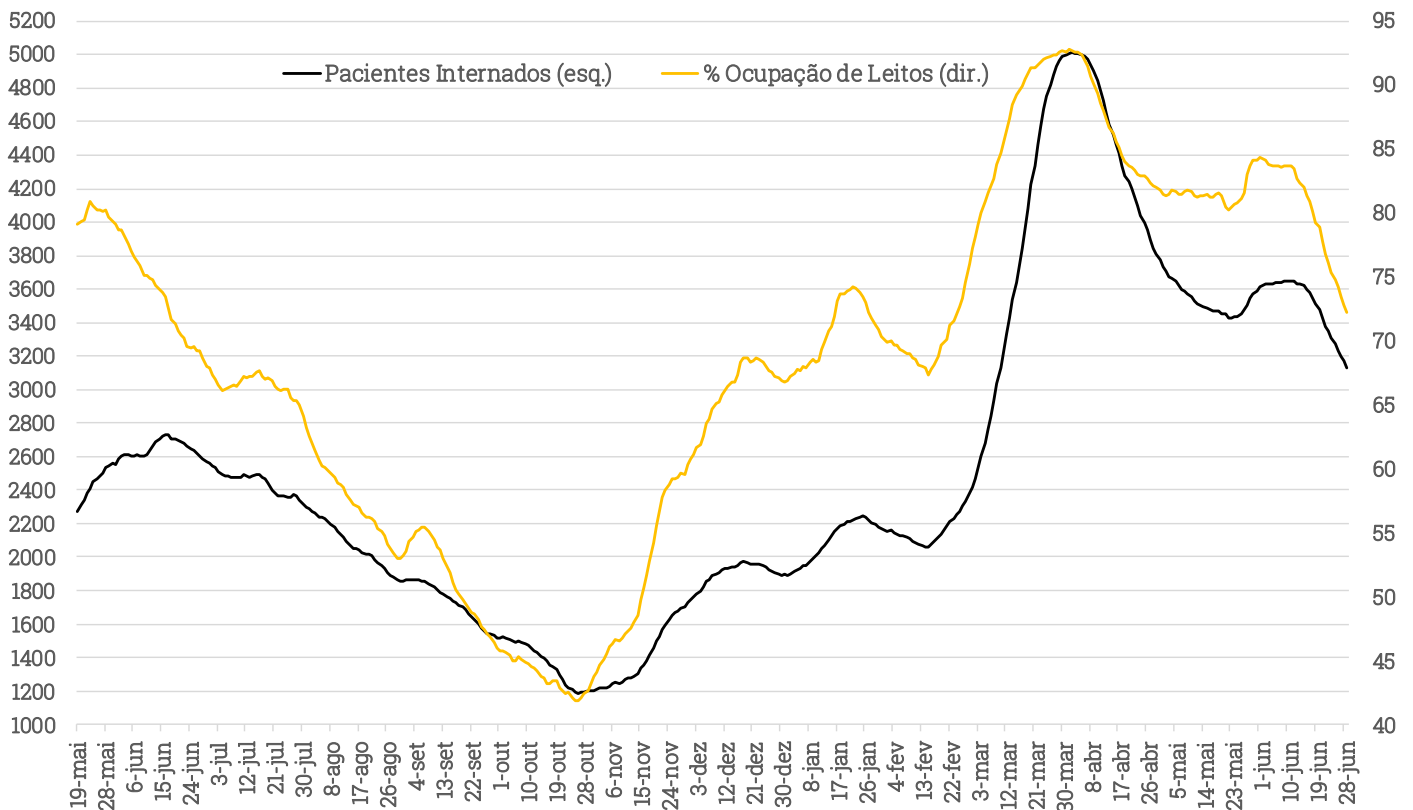
Internações em São Paulo

Internações em UTIs & %Ocupação de Leitos de Covid-19 (Estado de SP - mm7d)



Fonte: Secretaria de Saúde do Estado de São Paulo. Elaboração: XP Investimentos

Internações em UTIs & %Ocupação de Leitos de Covid-19 (SP Capital - mm7d)



Fonte: Secretaria de Saúde do Estado de São Paulo. Elaboração: XP Investimentos

Cronograma de Entregas de Vacinas

Cronograma de Entregas de Vacinas Covid-19* (milhões de doses)

Origem	Jan	Fev	Mar	Abr	Mai	Jun	Jul	Ago/Set	4T
Fiocruz (+AstraZeneca Imp.)	2.0	2.0	2.8	19.2	21.7	18.0	15.0	23.3	118.0
Butantan (+Sinovac Imp.)	8.7	4.9	22.8	5.8	5.1	5.0	10.0	37.8	30.0
Covax (AstraZeneca)	-	-	1.0	-	4.1	2.1	2.0	-	5.1
Covax (Pfizer)	-	-	-	-	-	0.8	-	-	-
Covax (A Definir)	-	-	-	-	-	-	-	-	-
Pfizer	-	-	-	1.0	2.5	12.0	15.0	69.5	100.0
Janssen	-	-	-	-	-	1.8	-	-	36.2
Total	10.7	6.9	26.6	26.0	33.4	39.7	42.0	130.6	289.3

Fonte: Ministério da Saúde. Elaboração: XP. *Atualizado em 23/06/21. Não considera Covaxin/Sputnik (30M doses)

Vacinação no Brasil

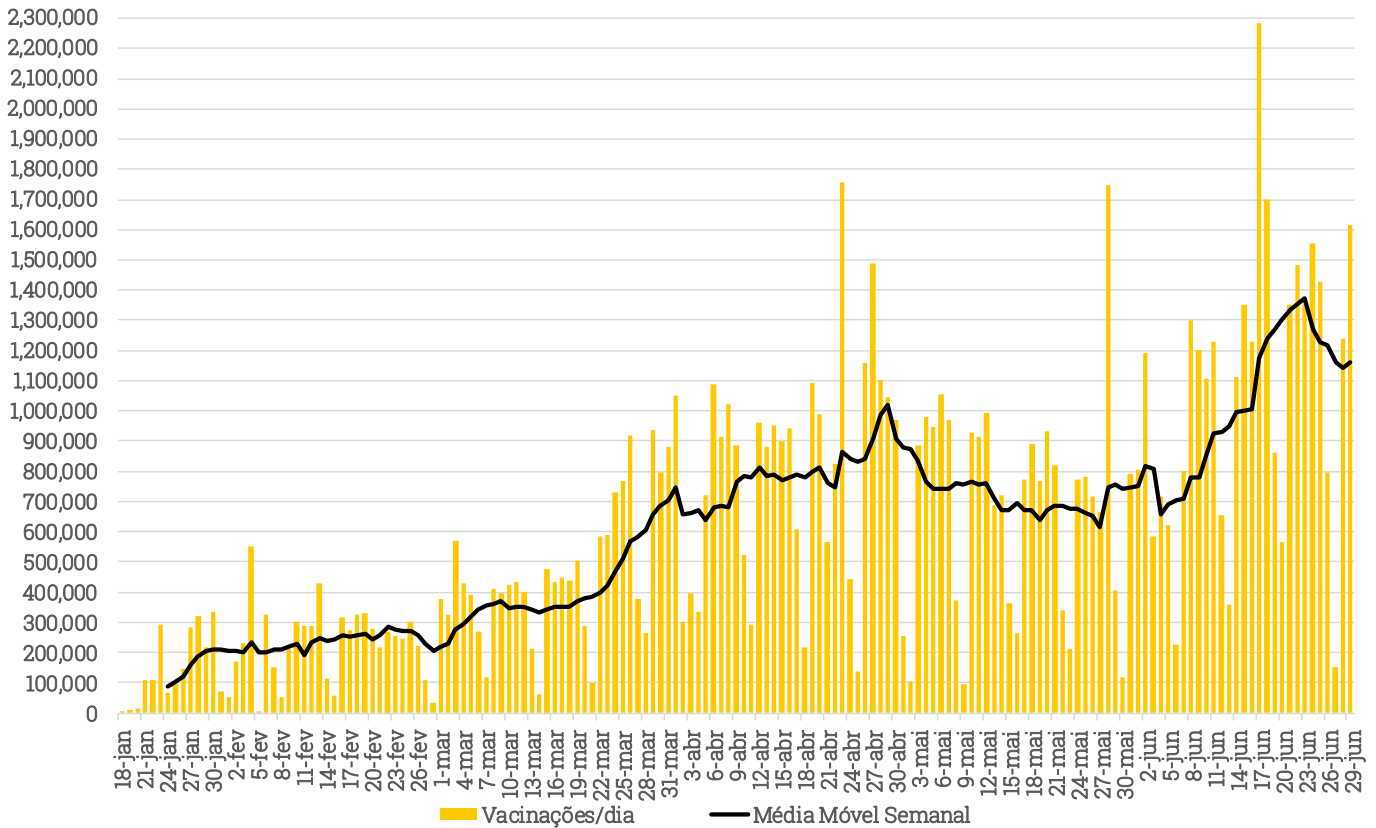
Vacinação nos Estados Brasileiros

UF	Doses Aplicadas (1ª Dose)	Doses Aplicadas (2ª Dose/Única)	Total de Doses Aplicadas	% Pop. com 1ª Dose	% Pop. com 2ª Dose/Única
MS	1,142,627	477,717	1,620,344	40.68%	17.01%
RS	4,619,559	1,856,498	6,476,057	40.45%	16.25%
SP	18,631,572	6,298,486	24,930,058	40.25%	13.61%
ES	1,556,767	545,648	2,102,415	38.30%	13.42%
PR	4,293,373	1,356,865	5,650,238	37.28%	11.78%
SC	2,575,370	813,686	3,389,056	35.51%	11.22%
CE	3,117,845	1,110,511	4,228,356	33.94%	12.09%
AM	1,391,230	541,880	1,933,110	33.06%	12.88%
SE	761,736	240,776	1,002,512	32.85%	10.38%
MG	6,971,415	2,691,450	9,662,865	32.74%	12.64%
BA	4,821,195	1,895,439	6,716,634	32.30%	12.70%
MA	2,297,273	624,060	2,921,333	32.28%	8.77%
RN	1,134,616	408,954	1,543,570	32.10%	11.57%
GO	2,264,732	713,049	2,977,781	31.83%	10.02%
PE	3,044,157	1,095,792	4,139,949	31.65%	11.39%
DF	966,178	352,569	1,318,747	31.63%	11.54%
RJ	5,471,641	2,066,110	7,537,751	31.50%	11.89%
PB	1,224,073	512,969	1,737,042	30.31%	12.70%
PA	2,619,707	1,135,148	3,754,855	30.14%	13.06%
PI	973,089	340,892	1,313,981	29.66%	10.39%
AL	978,200	355,380	1,333,580	29.19%	10.60%
AC	251,187	74,386	325,573	28.09%	8.32%
TO	429,119	149,310	578,429	26.98%	9.39%
MT	926,558	323,215	1,249,773	26.27%	9.16%
RO	471,915	155,076	626,991	26.26%	8.63%
RR	151,983	64,714	216,697	24.07%	10.25%
AP	189,849	66,184	256,033	22.03%	7.68%
Brasil	73,276,966	26,266,764	99,543,730	34.60%	12.40%

Fontes: Coronavirusbrl. Elaboração: XP Investimentos

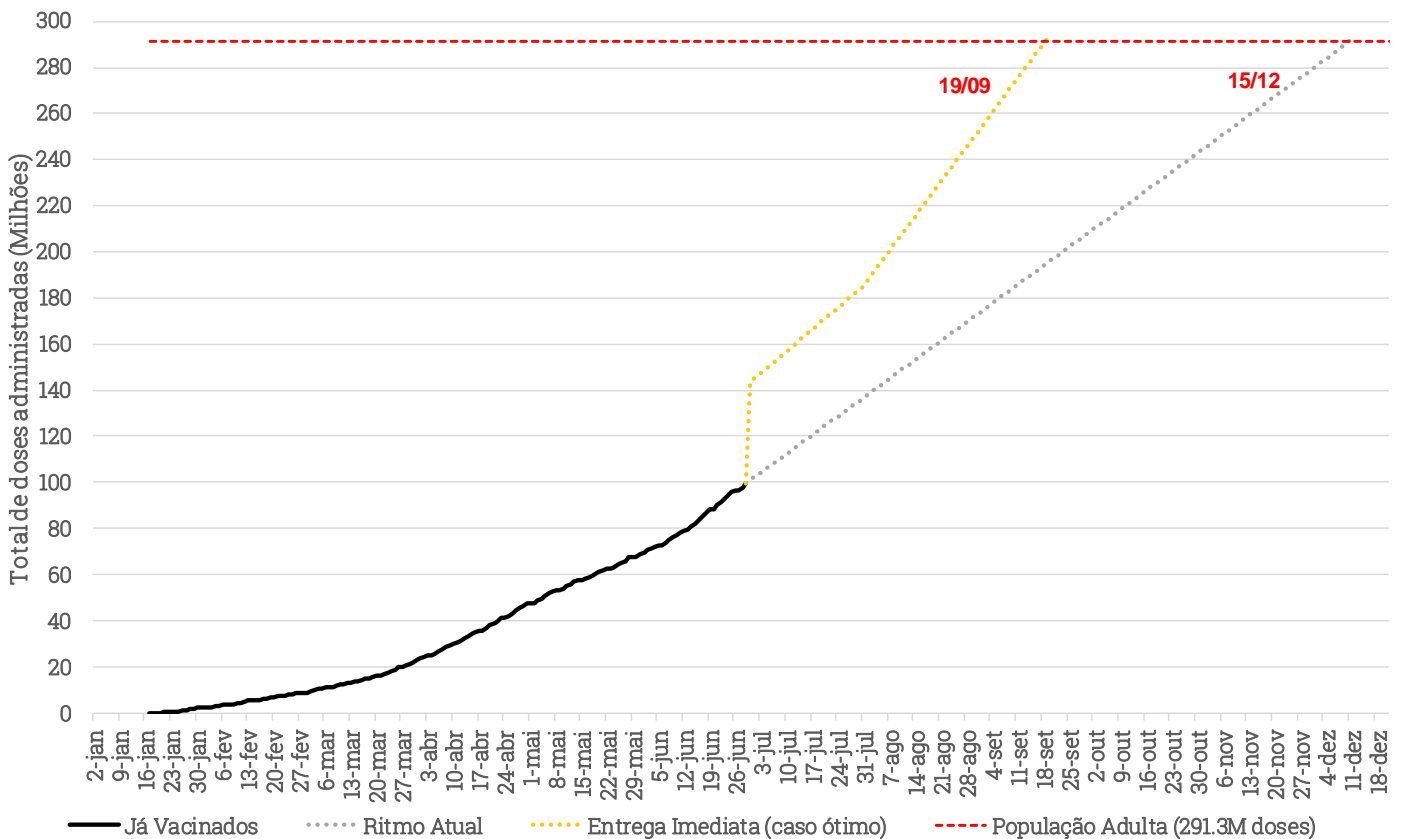
Vacinação no Brasil

Vacinação Diária: Brasil (Coronavirusbral)



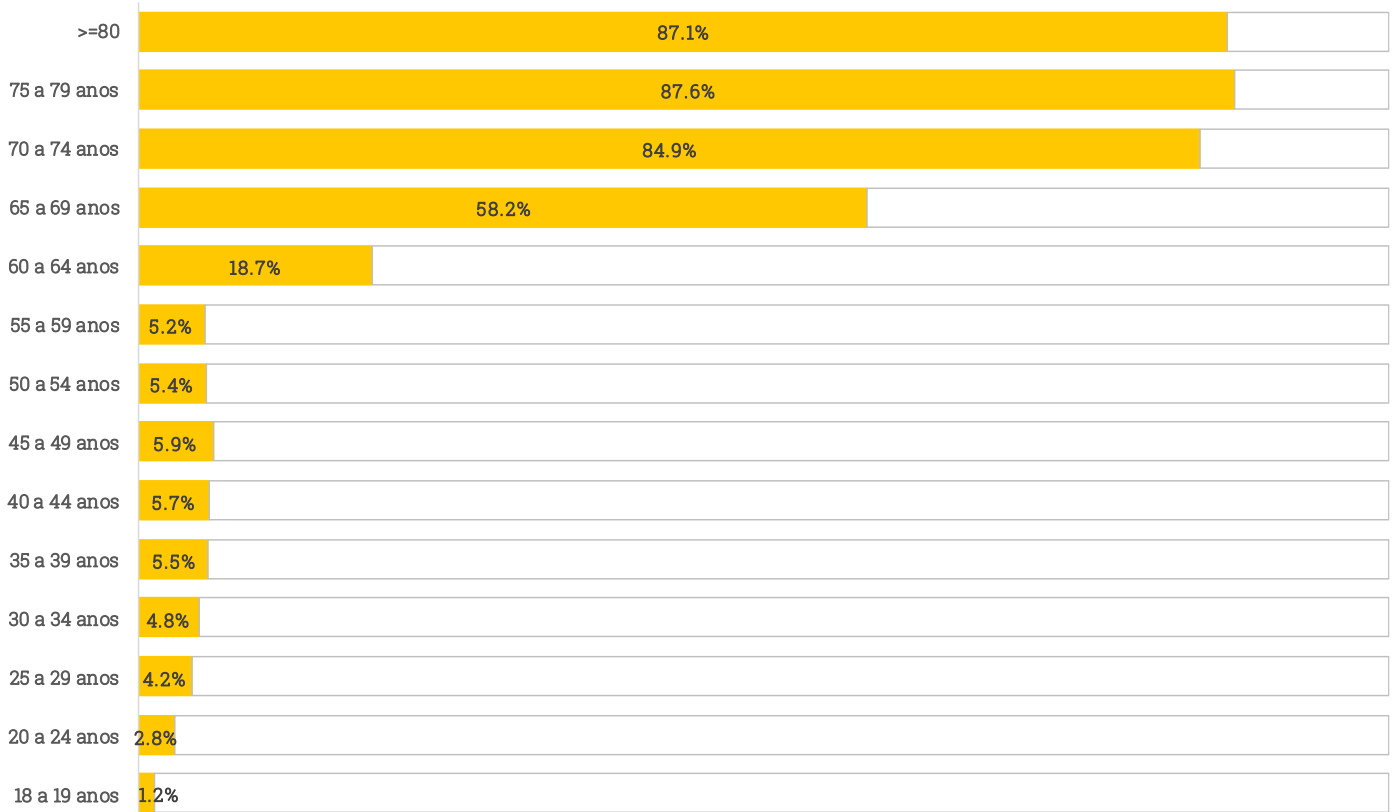
Fontes: Coronavirusbral. Elaboração: XP

Ritmo de Vacinação no Brasil (Coronavirusbral)



Fonte: Coronavirusbral. Elaboração: XP

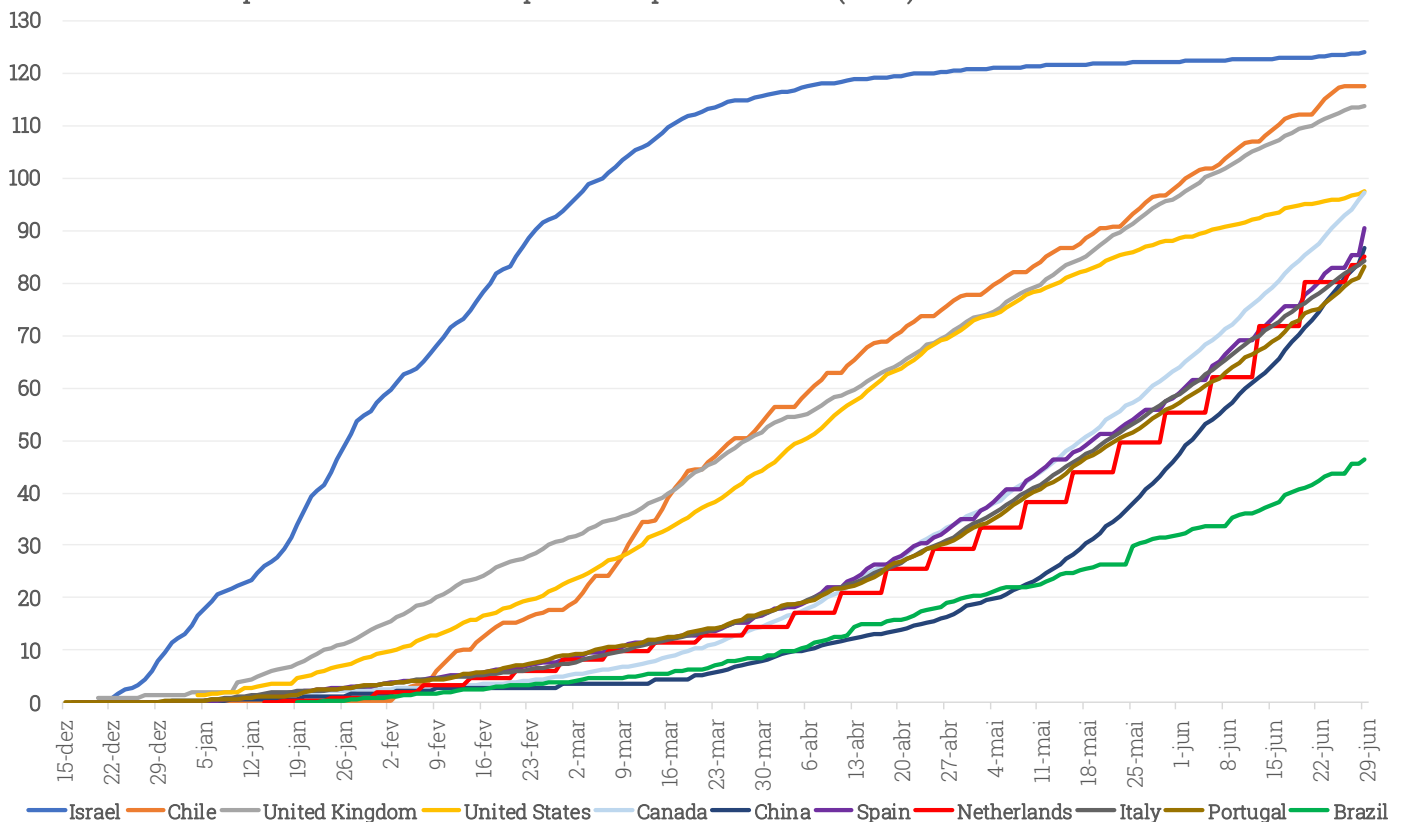
Percentual da População com 2 doses ou Dose Única



Fonte: Ministério da Saúde. Elaboração: XP

Vacinação no Mundo

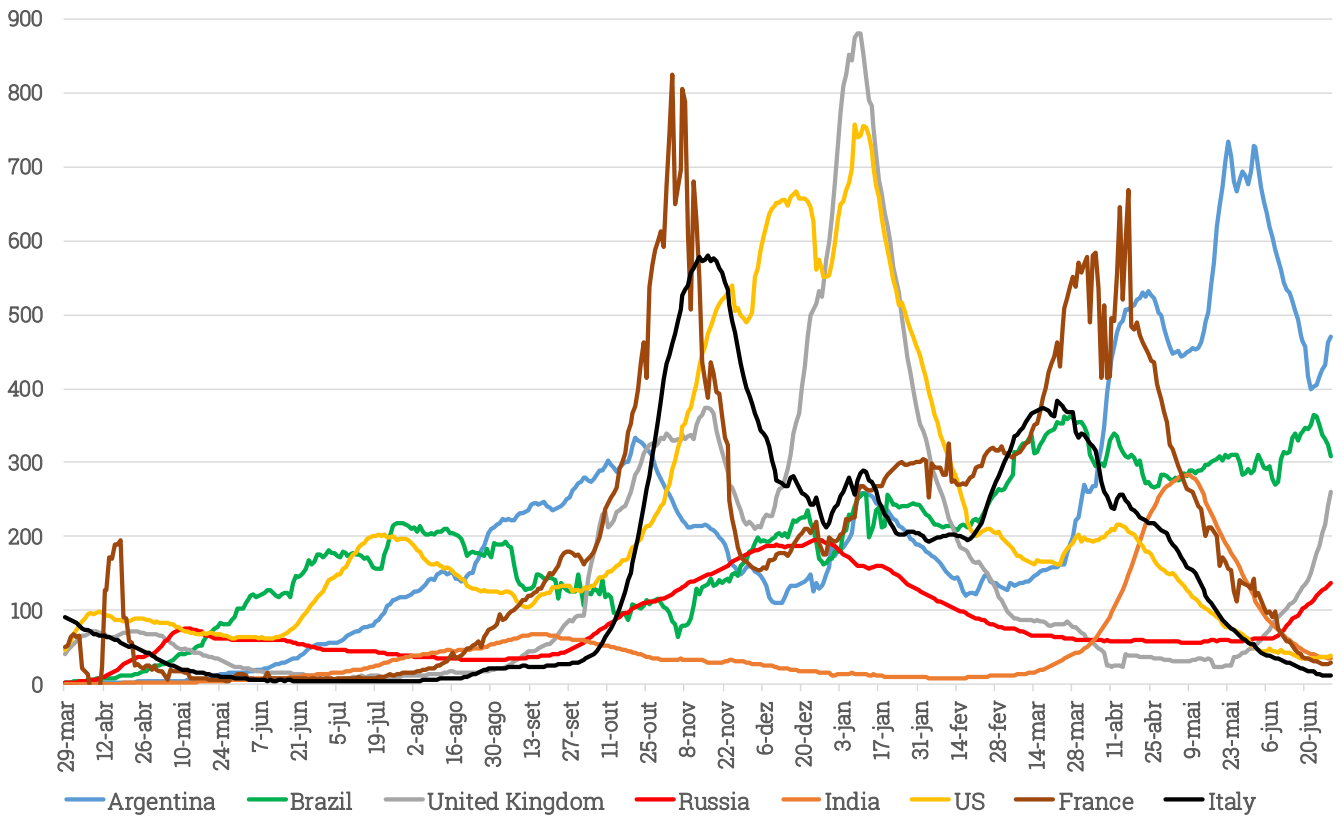
Doses de Vacina por 100 Habitantes- 10 primeiros países + Brasil (OWD)



Fonte: Our World in Data. Elaboração: XP

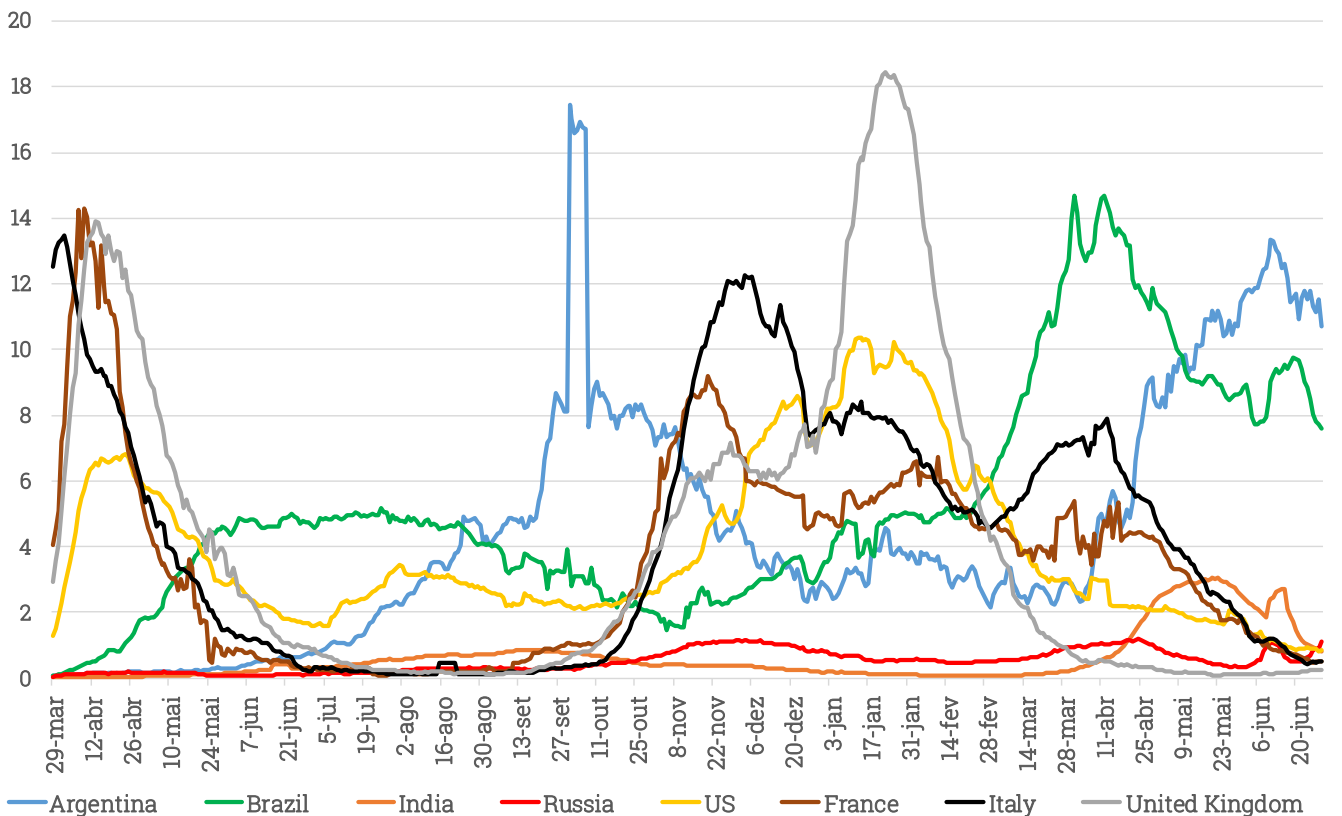
Países Selecionados

Novos Casos por Milhão de Habitantes (Média Móvel 7 Dias) - Principais Países (Johns Hopkins)



Fonte: JHU e ONU. Elaboração: XP Investimentos.

Novas Mortes por Milhão de Habitantes (Média Móvel 7 Dias) - Principais Países (JHU)



Fonte: JHU e ONU. Elaboração: XP Investimentos

XP MACRO STRATEGY & POLITICAL ANALYSIS

Richard Back
Head Political Analyst

Paulo Gama
Political Analyst

Victor Scalet
Political Analyst & Macro Strategist

Debora Santos
Political Analyst

Alexandre Maluf
Political Analyst

Marcelo Freller
Strategist

Junia Gama
Political Analyst

Sol Azcune
Political Analyst



@orichardback



@opaulogama



XP Frequência Política

Disclaimer

This material was prepared by XP Investimentos CCTVM S.A. (“XP Investimentos” ou “XP”) and should not be considered as a research material for the purpose of CVM Instruction 483/2010. All opinions, projections and estimates constitute the judgment of the author as of the date of transmission and these, plus any other information contained herein, are subject to change without notice. Nothing in this report constitutes a representation that any investment strategy or recommendation contained herein is suitable or appropriate to a recipient’s individual circumstances or otherwise constitutes a personal recommendation. This report is published solely for information purposes, it does not constitute an advertisement and is not to be construed as a solicitation or an offer to buy or sell any securities or related financial instruments. This material (including any attachments) is confidential, may contain proprietary or privileged information and is intended for the named recipient(s) only. XP Investimentos, affiliates, parentes, shareholders, director and officers does not provide any support, financially or otherwise to any political parties, political campaigns, candidates, or public officials.